



Smart Facilities solutions

We help our customers create future-ready pharmaceutical manufacturing and biotech facilities

BUILDING MANAGEMENT

Smart Facilities

Safer and more available environment

Building Management

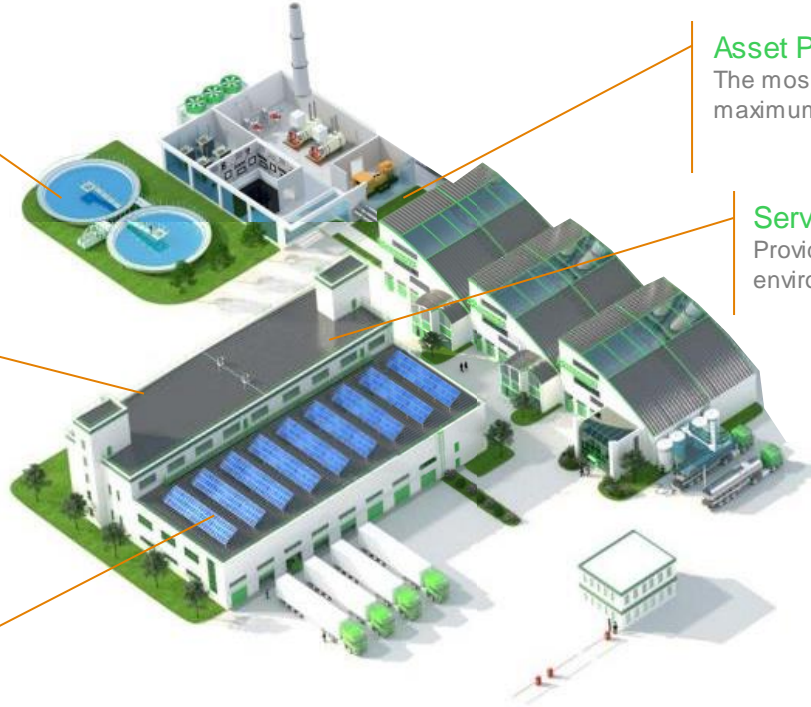
Provide the best conditions for your manufacturing operations

Environmental Control

Make sure your production environment comply with requirements and regulations

Power Safety & Availability

Standardization, site assessment, and predictive maintenance for Electrical Distribution



Asset Performance Management

The most comprehensive solution for a maximum economic return of your assets

Server Rooms management

Provide self contained and secure computing environment for your on-premise applications

Building Management (1/3)

Provide the best conditions for your manufacturing operations



- Building Management Systems (BMS) have an impact on timely, cost-effective delivery and compliant operations for Life Sciences facilities.
- Turnaround of a properly-qualified BMS is the last critical link in the overall facility delivery chain: a poorly designed, operated or maintained BMS can compromise product quality and research data, drawing the attention of regulatory authorities.

Building Management (2/3)

Provide the best conditions for your manufacturing operations



The Solution

- Integration of all facility subsystems (HVAC control, lighting, access control, CCTV, fire detection) through a reliable Building Management system will help you meeting your objective of providing safe and effective products to the patients.

[EcoStruxure™ Building Operation](#)

Building Management (3/3)

Provide the best conditions for your manufacturing operations



The Benefits

A reliable and efficient Building Management System should enable you to save money throughout your building system lifecycle:

- Design and installation costs savings of 24%
- Operational costs savings by 10%
- Energy costs savings of up to 35%
- Upgrade and retrofit.

[Download information](#)

University of Oslo's new Life Science Building, Norway

Developing state-of-the-art Norway's largest and most technical advanced University building with research laboratory for life sciences



Photo illustration: Ratio arkitekter/MIR

Customer Challenges

- Schneider Electric plays an important part of developing systems for the life-science of tomorrow
- Digital technical solutions to ensure the No.1 high performance building in Norway

The Solution

- EcoStruxure Building Operations, EBO 3.0
- PowerTags and PME
- Advisors

Other potential solutions from Schneider

- Fire Expert, Emergency lighting
- Canalis, Cable trays, LAN, final distribution
- Transformers, switch gears
- UPS solutions

Customer Benefits

- Future-oriented technology, flexible infrastructure and integrated building
- Monitor building data for insight and knowledge
- Secure energy consumption – BREEAM Excellent
- Reduce operating costs and climate footprint
- High comfort for students and personnel

The Results: Life Is On with...

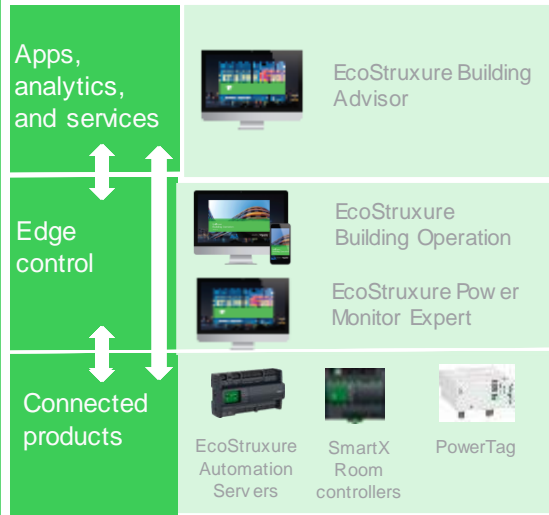
Norway's largest university building that will be environmentally friendly, easy to operate and ready for future technology.

Schneider Electric Norway has been awarded the contract for a BMS and automation system that will make Norway's largest university building environmentally friendly and easy to operate. We are confident that Schneider Electric Norway will deliver energy-efficient solutions that ensure easy operation, low costs, the best infection control and indoor climate.

Per Roger Johansen,
Project Director
Life-Science Building, Statsbygg

A building of **66.700** square meters to be ready in 2024, will be the new European arena for interdisciplinary collaboration, to help solve societal challenges in health and environment.

EcoStruxure™ For Life Sciences



[Webpage](#)
[Video](#)



Bio-Safety Level 4 Laboratory, UK

Building safe and secure high containment laboratory

Customer Challenges

Robust building design for a biosafe and bio-secure BSL3/BSL4 laboratory

- Strict pressure regime, cascades within +/-5Pa
- HVAC interface with and monitoring alarms of specialist systems (Fumigation chambers, APR doors, autoclaves, ETP, bio-safety cabinets etc.)
- Robust logging of all incidents and alarms – fast (1sec), manual change – for regulatory records

Solution

- BMS and SMS (Secondary Monitoring System)
- Room differential gauges for containment room
- Interface co-ordination between all 3rd party equipment and electrical power (by SE)
- Off site and on-site training
- BMS / SMS site maintenance service

Customer Benefits

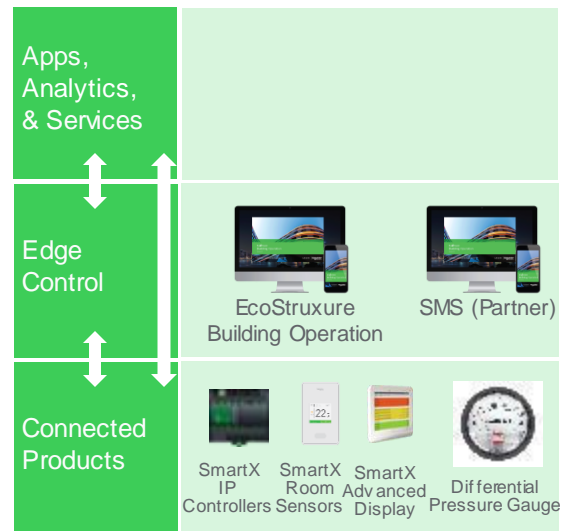
- Enabled the customer to attain BSL4 license from HSE (Health and Safety Executive) in a first time
 - Engaged from early design with value engineering and risk mitigation strategies
 - GEP and ACDP3/4 design guidance for documentation
 - Implement lesson learnt from mock-up lab
- Build the laboratory on time and within budget
- Site hosts for training and international references

The Results: Life Is On with...

Delivering complex projects from early design to construction on time and within budget

A new, state of the art, animal disease, high containment, bio-research facility for **BSL3** and **BSL4** classified pathogens

EcoStruxure™ for Life Sciences



[Video](#)

Life Is On

Schneider
Electric

Life Is On



Schneider
Electric

