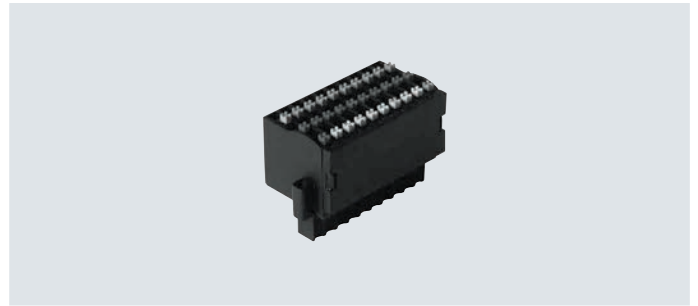


## Data sheet

## Plug PS1-SAC

- Power supply plug, 30-pin
- Simple cable connection using clamping technology


**General technical data**

Electrical connection	10-pin socket, 30-pin terminal strip
Operating voltage range [V AC]	Max. 50
Type of mounting	2x M2x7 screws With through-hole
Connection cross section [mm <sup>2</sup> ]	0.08 ... 0.75

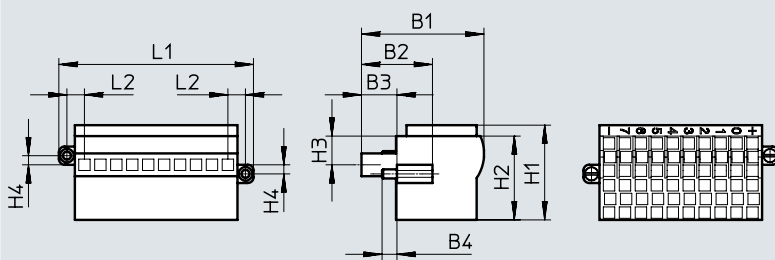
**Materials**

Housing	PBT
---------	-----

**Operating and environmental conditions**

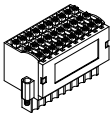
Ambient temperature [°C]	-20 ... +100
--------------------------	--------------

**Dimensions**

 Download CAD data → [www.festo.com](http://www.festo.com)


	B1	B2	B3	B4	H1	H2	H3	H4	L1	L2
PS1-SAC31	26.9	15.6	7.6	3.3 ... 3.9	20.8	18.4	6.3	2	42.7	3.9

**Ordering data**

	Electrical connection	Current rating [A]	Weight [g]	Part no.	Type
	10-pin socket, 30-pin terminal strip	0.5	25	<b>197162</b>	<b>PS1-SAC31-30POL+LED</b>

# Festo - Your Partner in Automation



**1 Festo Inc.**  
5300 Explorer Drive  
Mississauga, ON L4W 5G4  
Canada

**Festo Customer Interaction Center**  
Tel: 1 877 463 3786  
Fax: 1 877 393 3786  
Email: [customer.service.ca@festo.com](mailto:customer.service.ca@festo.com)



**2 Festo Pneumatic**  
Av. Ceylán 3,  
Col. Tequesquináhuac  
54020 Tlalnepantla,  
Estado de México

**Multinational Contact Center**  
01 800 337 8669  
[ventas.mexico@festo.com](mailto:ventas.mexico@festo.com)



**3 Festo Corporation**  
1377 Motor Parkway  
Suite 310  
Islandia, NY 11749

**Festo Customer Interaction Center**  
1 800 993 3786  
1 800 963 3786  
[customer.service.us@festo.com](mailto:customer.service.us@festo.com)



**4 Regional Service Center**  
7777 Columbia Road  
Mason, OH 45040

Connect with us



[www.festo.com/socialmedia](http://www.festo.com/socialmedia)



[www.festo.com](http://www.festo.com)

Subject to change