

PROTECTION AND CONNECTION

Switch fuses

OS100-200GB





Table of content

003	Type designation key
	Ordering information
004 –005	Manual operated switch fuses, GB-type, 100 A
005	Special connected switch fuses, GB-type, 100 A
006 –007	Manual operated switch fuses, GB-type, 125 A
008	Special connected switch fuses, GB-type, 125 A
009 –010	Manual operated switch fuses, GB-type, 160 A
011	Special connected switch fuses, GB-type, 160 A
012	Manual operated switch fuses, GB type, 200 A
014 –015	Dimensional drawings

Type designation key

Manual operated switch fuses 100-200 A

Type codes

Understanding the type code keys below will help you quickly identify the correct product for your needs. The simple naming system allows you to see the products type, ampere rating, standard classification and number of poles, all in one glance.

Explanation of the types OS100...200 A

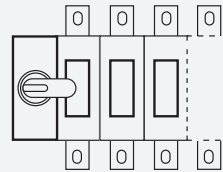
OS	125G	B	-	04	N2	-	P
1	2	3	4	5	6	7	8

1	Brand
OS	ABB switch fuse/fusible switch
2	Switch size / Ampere rating
100G-200G	Gamma, 100A...200A
3	Fuse type
B	BS
4	Switch operation
Blank	Front operation
S	Side operation
5	Number of poles and placing of the operating mechanism
03	3 poles, operating mechanism at the left end of the switch
04	4 poles, operating mechanism at the left end of the switch
12	3 poles, operating mechanism between the poles
22	4 poles, operating mechanism between the poles
30	3 poles, operating mechanism at the right end of the switch
40	4 poles, operating mechanism at the right end of the switch
6	Fourth pole / neutral terminal
Blank	Neutral terminal not included
N1	Non-fused switched neutral on the left side
N2	Non-fused switched neutral on the left side
N3	Includes a detachable neutral link integrated into the mechanism
F	Fused switch neutral
7	Terminals for special connections (only IEC)
Blank	No special connection
BB	Back in, back out
LR	Left in, right out
8	Included handle
Blank	No handle included
P	Pistol handle and shaft
K	Direct mount handle

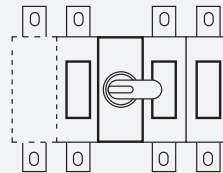
Pole configuration table

The various placing options of the operating mechanism in relation to the 3 or 4 poles is illustrated below. The operating mechanism may be placed at the end of the switch or between the poles.

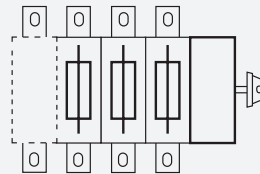
At the end of the switch fuses OS_03 or 04



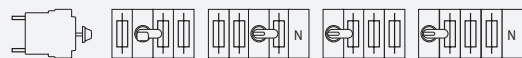
Between the poles OS_12 or 22



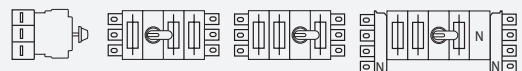
Side operated types OS_30 or 40 / OS_03 or 04



BB-types



LR-types



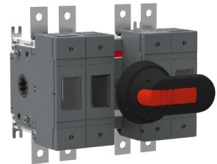
Ordering information

Manual operated switch fuses, GB-type, 100 A

N1= Non-fused switched neutral on the left side
 N2= Non-fused switched neutral on the left side
 N3= Includes a detachable neutral link integrated into the mechanism
 F= Fused switch neutral



OS100GB02P



OS100GB22N1P



OS100GB03N3P



OS100GBS30



OS100GBS40N1

Front operated

Rated current [A]	Number of poles	Type	Order number
With 161 mm shaft and external handle OHB65J6			
100	1	OS100GB01P	1SCA125891R1001
100	2	OS100GB02P	1SCA116723R1001
100	3	OS100GB03P	1SCA114613R1001
100	4	OS100GB04N1P	1SCA114614R1001
100	2	OS100GB11P	1SCA116851R1001
100	3	OS100GB12P	1SCA114586R1001
100	4	OS100GB22N1P	1SCA114602R1001
100	3+N	OS100GB03N3P	1SCA125531R1001
100	3+N	OS100GB12N3P	1SCA125486R1001
With direct mount handle			
100	3	OS100GB03K	1SCA116747R1001
100	4	OS100GB04N1K	1SCA116748R1001
Handle and shaft not included			
100	1	OS100GB01	1SCA125889R1001
100	2	OS100GB02	1SCA116793R1001
100	3	OS100GB03	1SCA116975R1001
100	4	OS100GB04N1	1SCA116976R1001
100	2	OS100GB11	1SCA116789R1001
100	3	OS100GB12	1SCA116969R1001
100	4	OS100GB22F	1SCA132552R1001
100	4	OS100GB22N1	1SCA116974R1001
100	3+N	OS100GB03N3	1SCA125530R1001
100	3+N	OS100GB12N3	1SCA125487R1001

Side operated

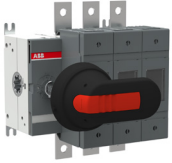
Rated current [A]	Number of poles	Type	Order number
Handle and shaft not included			
100	3	OS100GBS30	1SCA116758R1001
100	4	OS100GBS40N1	1SCA116759R1001
100	4	OS100GBS40N2	1SCA116760R1001

Ordering information

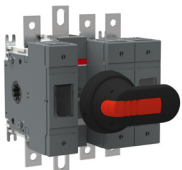
Manual operated switch fuses, GB-type, 100 A

N1= Non-fused switched neutral on the left side

N3= Includes a detachable neutral link integrated into the mechanism



OS100GB03P-42



OS100GB12N3P-42

Front operated

With integrated nuts

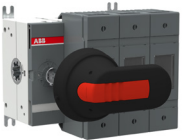
Rated current [A]	Number of poles	Type	Order number
With 161 mm shaft and external handle OHB65J6			
100	3	OS100GB03P-42	1SCA128217R1001
100	3	OS100GB12P-42	1SCA137536R1001
100	3+N	OS100GB03N3P-42	1SCA129907R1001
100	3+N	OS100GB12N3P-42	1SCA129910R1001
Handle and shaft not included			
100	3	OS100GB03-42	1SCA128216R1001
100	3	OS100GB12-42	1SCA137532R1001
100	4	OS100GB22N1-42	1SCA138291R1001
100	3+N	OS100GB03N3-42	1SCA129906R1001
100	3+N	OS100GB12N3-42	1SCA129909R1001

Ordering information

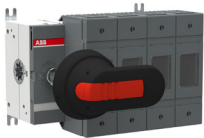
Special connected switch fuses, GB-type, 100 A

N2= Non-fused switched neutral on the left side

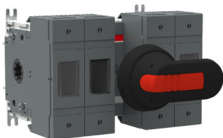
F= Fused switch neutral



OS100GB03BBP



OS100GB04BBN2P



OS100GB22BBFP

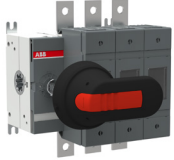
Front operated, back in - back out connection

Rated current [A]	Number of poles	Type	Order number
With 161 mm shaft and external handle OHB65J6			
100	3	OS100GB03BBP	1SCA120676R1001
100	4	OS100GB04BBFP	1SCA120788R1001
100	4	OS100GB04BBN2P	1SCA120692R1001
100	3	OS100GB12BBP	1SCA120721R1001
100	4	OS100GB22BBFP	1SCA120797R1001
100	4	OS100GB22BBN2P	1SCA120724R1001
Handle and shaft not included			
100	3	OS100GB03BB	1SCA120675R1001
100	4	OS100GB04BBF	1SCA120787R1001
100	4	OS100GB04BBN2	1SCA120679R1001
100	3	OS100GB12BB	1SCA120718R1001
100	4	OS100GB22BBF	1SCA120796R1001
100	4	OS100GB22BBN2	1SCA120723R1001

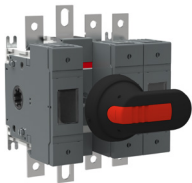
Ordering information

Manual operated switch fuses, GB-type, 125 A

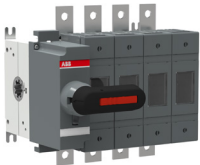
N1= Non-fused switched neutral on the left side
 N2= Non-fused switched neutral on the left side
 N3= Includes a detachable neutral link integrated into the mechanism



OS125GB03P



OS125GB12N3P



OS125GB04N1K



OS125GBS40N1K

Front operated

Rated current [A]	Number of poles	Type	Order number
With 161 mm shaft and external handle OHB65J6			
125	2	OS125GB02P	1SCA116724R1001
125	3	OS125GB03P	1SCA115634R1001
125	4	OS125GB04N1P	1SCA115901R1001
125	2	OS125GB11P	1SCA116853R1001
125	3	OS125GB12P	1SCA114603R1001
125	3	OS125GB21P	1SCA132197R1001
125	4	OS125GB22N1P	1SCA115903R1001
125	3+N	OS125GB03N3P	1SCA122008R1001
125	3+N	OS125GB12N3P	1SCA123547R1001
With direct mount handle			
125	3	OS125GB03K	1SCA116751R1001
125	4	OS125GB04N1K	1SCA116752R1001
Handle and shaft not included			
125	2	OS125GB02	1SCA116794R1001
125	3	OS125GB03	1SCA115633R1001
125	4	OS125GB04N1	1SCA115900R1001
125	2	OS125GB11	1SCA116790R1001
125	3	OS125GB12	1SCA115635R1001
125	3	OS125GB12N3	1SCA123548R1001
125	3	OS125GB21	1SCA132196R1001
125	4	OS125GB22N1	1SCA115902R1001
125	3+N	OS125GB03N3	1SCA122007R1001

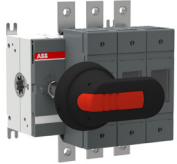
Side operated

Rated current [A]	Number of poles	Type	Order number
Handle and shaft not included			
125	3	OS125GBS30	1SCA116048R1001
125	4	OS125GBS40N1	1SCA115959R1001
125	4	OS125GBS40N2	1SCA116761R1001
With direct mount handle			
125	3	OS125GBS30K	1SCA116400R1001
125	4	OS125GBS40N1K	1SCA115926R1001

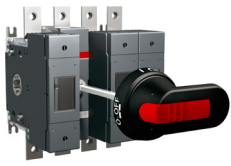
Ordering information

Manual operated switch fuses, GB-type, 125 A

N3= Includes a detachable neutral link integrated into the mechanism



OS125GB03P-42



OS125GB12N3P-42

Front operated

With integrated nuts

Rated current [A]	Number of poles	Type	Order number
With 161 mm shaft and external handle OHB65J6			
125	3	OS125GB03P-42	1SCA128215R1001
125	3	OS125GB03-42	1SCA128214R1001
125	3+N	OS125GB03N3P-42	1SCA129912R1001
125	3+N	OS125GB12N3P-42	1SCA129914R1001
Handle and shaft not included			
125	3+N	OS125GB03N3-42	1SCA129911R1001
125	3+N	OS125GB12N3-42	1SCA129913R1001

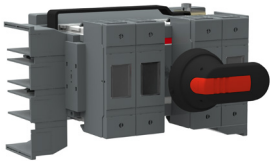
Ordering information

Special connected switch fuses, GB-type, 125 A

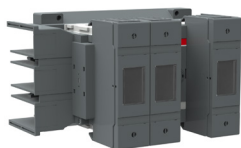
N1= Non-fused switched neutral on the left side

N2= Non-fused switched neutral on the left side

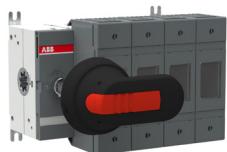
F= Fused switch neutral



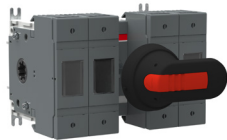
OS125GB22LRP



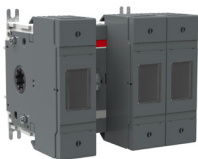
OS125GB21LR



OS125GB04BBFP



OS125GB22BBFP



OS125GB12BBP

Front operated, Left in - Right out Connection

Rated current [A]	Number of poles	Type	Order number
With 161 mm shaft and external handle OHB65J6			
125	3	OS125GB12LRP	1SCA120258R1001
125	4	OS125GB22LRP	1SCA120265R1001
Handle and shaft not included			
125	3	OS125GB12LR	1SCA120257R1001
125	3	OS125GB21LR	1SCA120259R1001

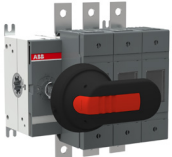
Front operated, Back in - Back out Connection

Rated current [A]	Number of poles	Type	Order number
With 161 mm shaft and external handle OHB65J6			
125	3	OS125GB03BBP	1SCA120783R1001
125	4	OS125GB04BBFP	1SCA120790R1001
125	4	OS125GB04BBN1P	1SCA122597R1001
125	4	OS125GB04BBN2P	1SCA120785R1001
125	3	OS125GB12BBP	1SCA120799R1001
125	4	OS125GB22BBFP	1SCA120794R1001
125	4	OS125GB22BBN2P	1SCA120813R1001
Handle and shaft not included			
125	3	OS125GB03BB	1SCA120782R1001
125	4	OS125GB04BBF	1SCA120789R1001
125	4	OS125GB04BBN1	1SCA122722R1001
125	4	OS125GB04BBN2	1SCA120784R1001
125	3	OS125GB12BB	1SCA120798R1001
125	4	OS125GB22BBF	1SCA120793R1001
125	4	OS125GB22BBN2	1SCA120800R1001

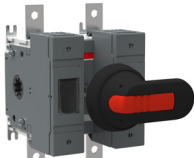
Ordering information

Manual operated switch fuses, GB-type, 160 A

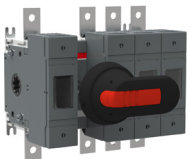
N1= Non-fused switched neutral on the left side
 N2= Non-fused switched neutral on the left side
 N3= Includes a detachable neutral link integrated into the mechanism
 F= Fused switch neutral



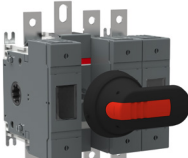
OS160GB03P



OS160GB11P



OS160GB13N1P



OS160GB12N3P



OS160GBS30K



OS160GBS40N1K

Front operated

With integrated nuts

Rated current [A]	Number of poles	Type	Order number
With 161 mm shaft and external handle OHB65J6			
160	2	OS160GB02P	1SCA116725R1001
160	3	OS160GB03P	1SCA115413R1001
160	4	OS160GB04FP	1SCA115419R1001
160	4	OS160GB04N1P	1SCA115896R1001
160	2	OS160GB11P	1SCA117430R1001
160	3	OS160GB12P	1SCA115637R1001
160	4	OS160GB13N1P	1SCA118094R1001
160	3	OS160GB21P	1SCA132200R1001
160	4	OS160GB22N1P	1SCA115899R1001
160	3+N	OS160GB03N3P	1SCA122010R1001
160	3+N	OS160GB12N3P	1SCA123461R1001
With direct mount handle			
160	3	OS160GB03K	1SCA116753R1001
160	4	OS160GB04N1K	1SCA116754R1001
Handle and shaft are not included			
160	2	OS160GB02	1SCA116795R1001
160	3	OS160GB03	1SCA115412R1001
160	4	OS160GB04F	1SCA115418R1001
160	4	OS160GB04N1	1SCA115895R1001
160	2	OS160GB11	1SCA116791R1001
160	3	OS160GB12	1SCA115636R1001
160	4	OS160GB13N1	1SCA118105R1001
160	3	OS160GB21	1SCA132198R1001
160	4	OS160GB22N1	1SCA115898R1001
160	3+N	OS160GB03N3	1SCA122009R1001
160	3+N	OS160GB12N3	1SCA123460R1001

Side operated

Rated current [A]	Number of poles	Type	Order number
Handle and shaft not included			
160	3	OS160GBS30	1SCA115960R1001
160	4	OS160GBS40N1	1SCA115961R1001
160	4	OS160GBS40N2	1SCA116762R1001
With direct mount handle			
160A	3	OS160GBS30K	1SCA115927R1001
160	4	OS160GBS40N1K	1SCA115928R1001

Ordering information

Manual operated switch fuses, GB-type, 160 A

N1= Non-fused switched neutral on the left side

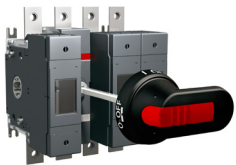
N3= Includes a detachable neutral link integrated into the mechanism



OS160GB03-42



OS160GB03N3P-42



OS160GB12N3P-42

Front operated

With integrated nuts

Rated current [A]	Number of poles	Type	Order number
With 161 mm shaft and external handle OHB65J6			
160	3	OS160GB03P-42	1SCA128213R1001
160	3+N	OS160GB03N3P-42	1SCA129916R1001
160	3+N	OS160GB12N3P-42	1SCA129919R1001
Handle and shaft not included			
160	3	OS160GB03-42	1SCA128212R1001
160	3	OS160GB12-42	1SCA138290R1001
160	4	OS160GB22N1-42	1SCA138299R1001
160	3+N	OS160GB03N3-42	1SCA129915R1001
160	3+N	OS160GB12N3-42	1SCA129918R1001

Ordering information

Special connected switch fuses, GB-type, 160 A

N1= Non-fused switched neutral on the left side

N2= Non-fused switched neutral on the left side

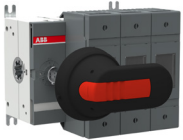
F= Fused switch neutral



OS160GB21LR

Front operated, Left in - Right out Connection

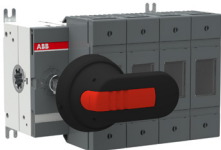
Rated current [A]	Number of poles	Type	Order number
Handle and shaft not included			
160	3	OS160GB12LR	1SCA123716R1001



OS160GB03BBP

Front operated, Back in - Back out Connection

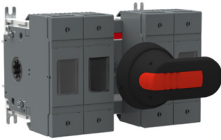
Rated current [A]	Number of poles	Type	Order number
With 161 mm shaft and external handle OHB65J6			
160	3	OS160GB03BBP	1SCA120657R1001
160	4	OS160GB04BBFP	1SCA120663R1001
160	4	OS160GB04BBN1P	1SCA122598R1001
160	4	OS160GB04BBN2P	1SCA120665R1001
160	3	OS160GB12BBP	1SCA120726R1001
160	4	OS160GB22BBFP	1SCA120749R1001
160	4	OS160GB22BBN2P	1SCA120728R1001



OS160GB04BBFP

Handle and shaft not included

160	3	OS160GB03BB	1SCA120656R1001
160	4	OS160GB04BBF	1SCA120662R1001
160	4	OS160GB04BBN2	1SCA120664R1001
160	3	OS160GB12BB	1SCA120725R1001
160	4	OS160GB22BBF	1SCA120748R1001



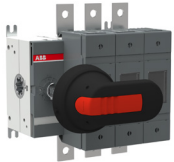
OS160GB22BBFP

Ordering information

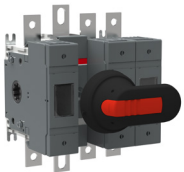
Manual operated switch fuses, GB-type, 200 A

N1= Non-fused switched neutral on the left side

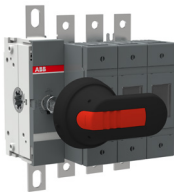
N3= Includes a detachable neutral link integrated into the mechanism



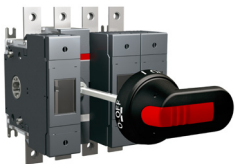
OS200GB03P



OS200GB12N3P



OS200GB03N3P



OS200GB12N3P-42



OS200GB03N3P-42

Front operated

Rated current [A]	Number of poles	Type	Order number
With 161 mm shaft and external handle OHB65J6			
200	3	OS200GB03P	1SCA125468R1001
200	4	OS200GB04N1P	1SCA125493R1001
200	3	OS200GB12P	1SCA125467R1001
200	4	OS200GB22N1P	1SCA132202R1001
200	3+N	OS200GB03N3P	1SCA126216R1001
200	3+N	OS200GB12N3P	1SCA133678R1001
With direct mount handle			
200	3	OS200GB03K	1SCA128085R1001
200	3	OS200GB12K	1SCA128086R1001
200	3+N	OS200GB03N3K	1SCA128087R1001
Handle and shaft not included			
200	3	OS200GB03	1SCA123903R1001
200	4	OS200GB04N1	1SCA125491R1001
200	3	OS200GB12	1SCA125446R1001
200	4	OS200GB22N1	1SCA132203R1001
200	3+N	OS200GB03N3	1SCA123904R1001

Front operated

With integrated nuts

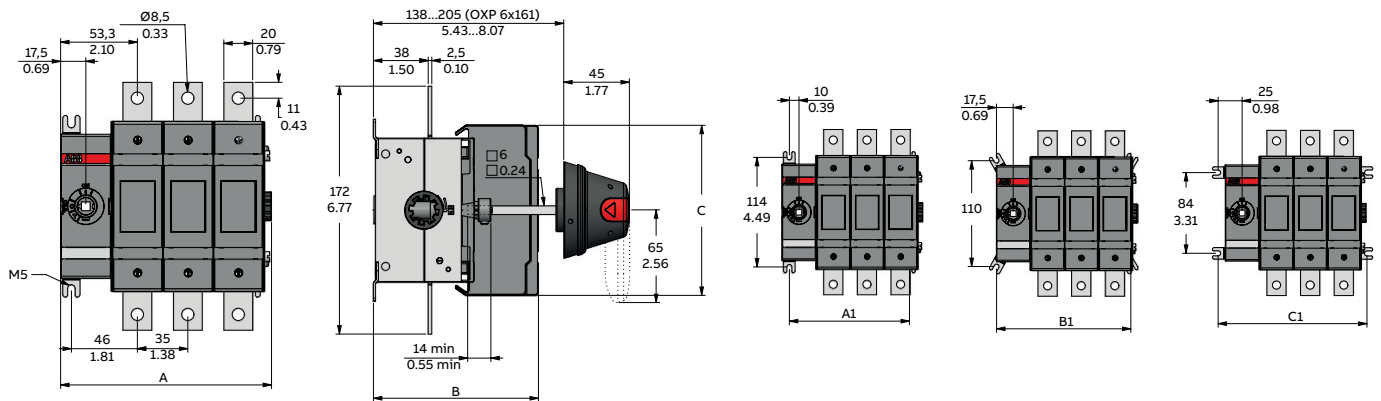
Rated current [A]	Number of poles	Type	Order number
With 161 mm shaft and external handle OHB65J6			
200	3	OS200GB03P-42	1SCA128211R1001
200	3	OS200GB12P-42	1SCA137534R1001
200	3+N	OS200GB03N3P-42	1SCA129922R1001
Handle and shaft not included			
200	3	OS200GB03-42	1SCA128210R1001
200	3	OS200GB12-42	1SCA137533R1001
200	4	OS200GB22N1-42	1SCA138300R1001
200	3+N	OS200GB03N3-42	1SCA129921R1001

Dimensional drawings

Front operated switch fuses, IEC

OS100...200G_P

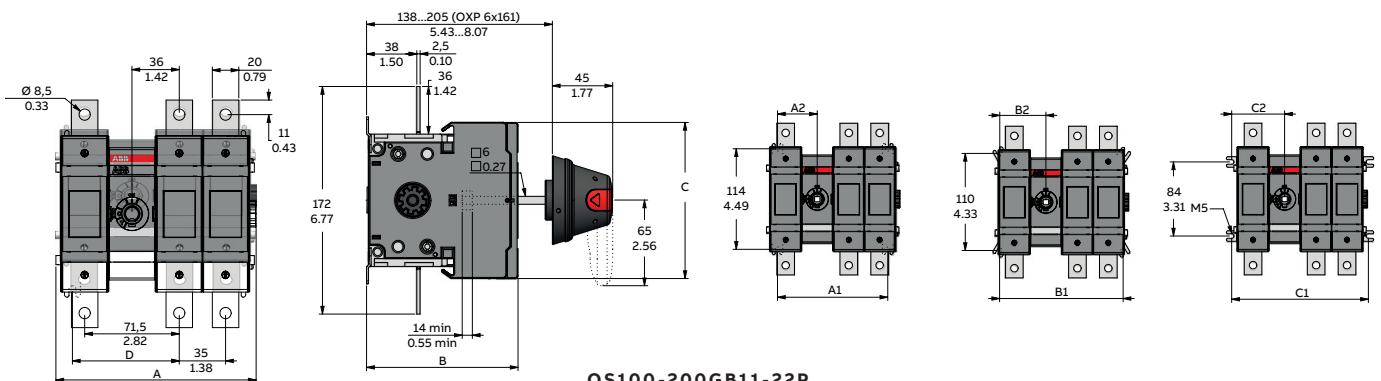
Mechanism at the end of the switch fuse



OS100-200GB01-04P

	B01	B02	B03	B04
A	76,5/3.01	111,5/4.55	146,5/5.77	181,5/7.15
B	114,5/4.51	114,5/4.51	114,5/4.51	114,5/4.51
C	118/4.65	118/4.65	118/4.65	118/4.65
A1	55/2.17	90/3.54	125/4.92	160/6.30
B1	70/2.76	105/4.13	140/5.51	175/6.89
C1	85/3.35	120/4.72	155/6.10	190/7.48

Mechanism between the poles



OS100-200GB11-22P

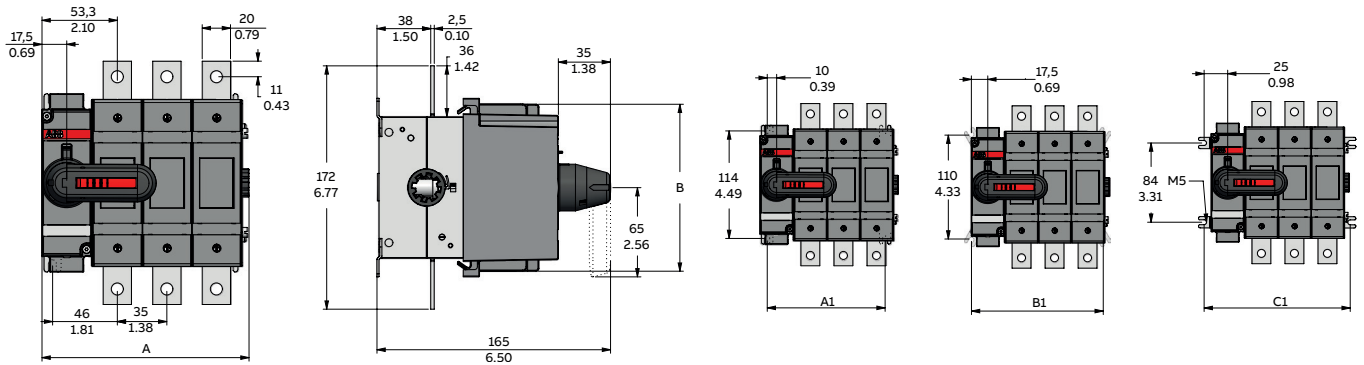
	B11	B12	B13	B22
A	116,5/4.59	151,5/5.96	186,5/7.34	186,5/7.34
B	114,5/4.51	114,5/4.51	114,5/4.51	114,5/4.51
C	118/4.65	118/4.65	118/4.65	118/4.65
D	81/3.19	81/3.19	81/3.19	106/4.17
A1	90/3.54	125/4.92	160/6.30	160/6.30
A2	45/1.77	45/1.77	45/1.77	80/3.15
B1	105/4.13	140/5.51	175/6.89	175/6.89
B2	52,5/2.07	52,5/2.07	52,5/2.07	87,5/3.44
C1	120/4.72	155/6.10	190/7.48	190/7.48
C2	60/2.36	60/2.36	60/2.36	95/3.74

Dimensional drawings

Front operated switch fuses, IEC

OS100G_K...OS160G_K

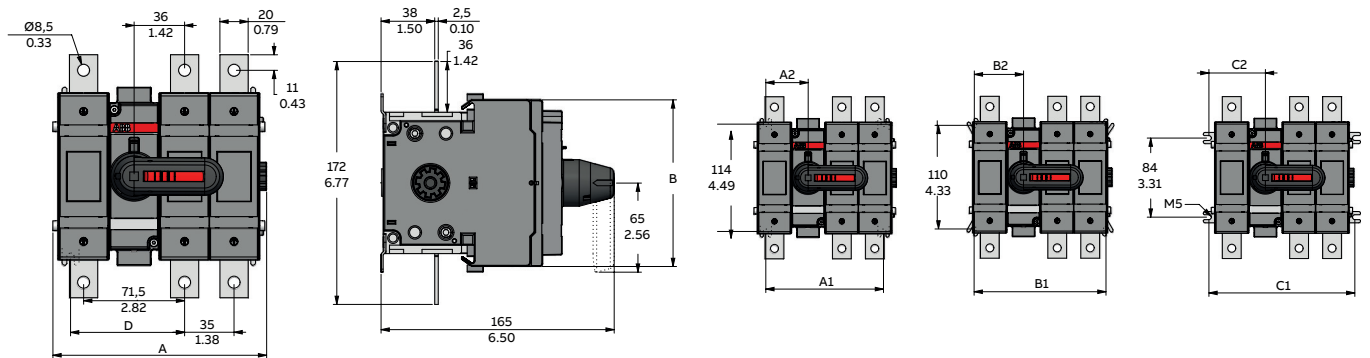
Mechanism at the end of the switch fuse



OS100-160GB01-04K

	B01	B02	B03	B04
A	76,5/3.01	111,5/4.55	146,5/5.77	181,5/7.15
B	114,5/4.51	114,5/4.51	114,5/4.51	114,5/4.51
A1	55/2.17	90/3.54	125/4.92	160/6.30
B1	70/2.76	105/4.13	140/5.51	175/6.89
C1	85/3.35	120/4.72	155/6.10	190/7.48

Mechanism at the end of the switch fuse



OS100-160GB11-22K

	B11	B12	B13	B22
A	116,5/4.59	151,5/5.96	186,5/7.34	186,5/7.34
B	118/4.65	118/4.65	118/4.65	118/4.65
C	81/3.19	81/3.19	81/3.19	81/3.19
A1	90/3.54	125/4.92	160/6.30	160/6.30
A2	45/1.77	45/1.77	45/1.77	80/3.15
B1	105/4.13	140/5.51	175/6.89	175/6.89
B2	52,5/2.07	52,5/2.07	52,5/2.07	87,5/3.44
C1	120/4.72	155/6.10	190/7.48	190/7.48
C2	60/2.36	60/2.36	60/2.36	95/3.74
C2	60/2.36	60/2.36	60/2.36	95/3.74

Additional information

We reserve the right to make technical changes or modify the contents of this document without prior notice. With regard to purchase orders, the agreed particulars shall prevail. ABB OY does not accept any responsibility whatsoever for potential errors or possible lack of information in this document.

We reserve all rights in this document and in the subject matter and illustrations contained therein. Any reproduction, disclosure to third parties or utilization of its contents – in whole or in parts – is forbidden without prior written consent of ABB OY.



—
ABB Oy
Protection and Connection
P.O. Box 622
FI-65101 Vaasa, Finland
Phone: +358 10 22 11
Fax: +358 10 22 45708

new.abb.com/low-voltage

Find the address of your local sales organization on the ABB homepage:

www.abb.com/contacts
> **Low Voltage Products and Systems**

