

ELECTRIFICATION SERVICE

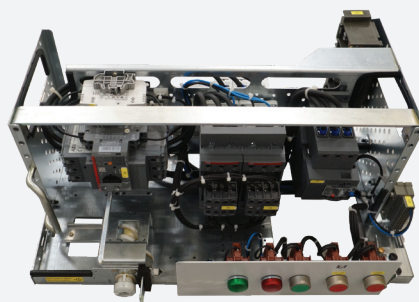
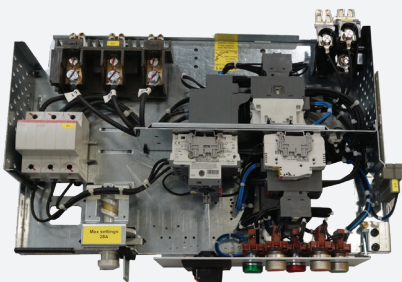
Retrofit solution

For withdrawable modules of SEN Plus cubicles (GE legacy product)

For customers who invested in low voltage systems, it is crucial to take care of condition of switchgears and motor control centers. Withdrawable modules is one component of this equipment, which makes it a critical part in the process of a factory. Failure of just one drawer can lead to lengthy downtime and very high costs. ABB Electrification service offers a wide range of services to ensure safe and trouble-free operation of the motor control centers and to extend the service life cycle of the low voltage switchgears.

After the acquisition of GE Industrial Solutions (GEIS) ABB has gone through an extensive effort to streamline its product portfolio with the target to ensure that products and systems provide the highest standards in terms of safety, reliability and performance for our customers. As part of this exercise, former GEIS switchgear has become an integral part of the ABB IEC LV switchgear offering and as such is subject to continued product enhancements and improvements. Compatibility and interchangeability of already sold equipment is one of our major priorities maintained through the product life cycle.

As GE components are becoming obsolete, ABB is offering a seamless transition between old and new products by introducing one-to-one replacement of existing SEN Plus modules with active components with a purpose to extend the life cycle of motor control centers, ensuring upgrade of the switchgear within minimal system downtime.





Benefits

Increase of safety

- Using type-2 coordination combinations.
- Modules with ABB components are design verified in accordance to IEC-61439 standard.



Increase in reliability

- Spare parts availability is guaranteed for many years as the new parts are in active phase.
- ABB is using modern technologies and the latest components.



Reduction in downtime

- Replacement of the drawers can partly take place during operational hours.
- Replacement can be done in several steps, old and new drawers can operate in one switchgear.



Sustainability

- Achieved by extending the life cycle of your electrical system and minimizing raw materials usage.

Retrofitting procedures

- Replacement with retrofitted withdrawable module.
- Pre-engineered module's door is developed to adapt with the new module's switching device.
- Replacement of cable room door.
- For IP54 switchgears, roof with pressure flap shall be used.

What is needed for a quote?

The following basic details are necessary for providing standard retrofit solutions offer:

- Feeder details (KW, ampere, application)
- Switchgear drawings (SLD, GA, schematic)
- List of components (BOM)
- Switchgear nameplate.