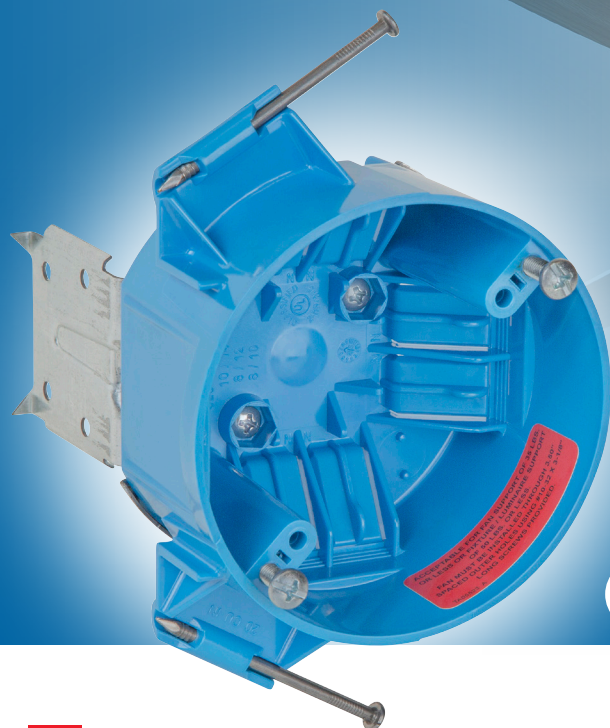


# Above the rest



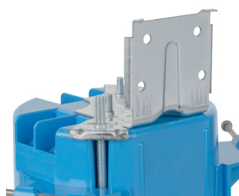
## Carlon Blue® fan-rated ceiling box

Meets the latest NEC requirements for ceiling fan support

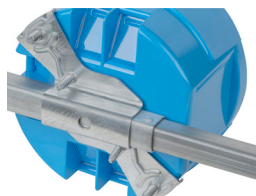
### Carlon®

#### Did you know?

Improperly installed ceiling fans injure nearly 20,000 people annually in the U.S. The National Electrical Code (NEC) has changed to help prevent this. Choose the new UL listed Carlon Blue fan-rated ceiling box, rated for use with ceiling fans up to 35 lb., to meet the updated standard.



Vibration-resistant screws through reinforced metal brackets provide greater strength than plastic alone.



Hanger bar adjusts from 14 $\frac{3}{8}$ " to 22 $\frac{1}{2}$ " to position box between ceiling joists. Rated for 50 lb. fixture and 35 lb. fan support up to the full 22 $\frac{1}{2}$ " span.



Meets the latest industry requirements for ceiling fan support



Rated for 50 lb. light fixture and 35 lb. ceiling fan



Takes the guesswork out of selecting a fan-rated box



Offers confidence, peace of mind and safety



Sustainably produced in Tennessee, extensively tested and backed by an Environmental Product Declaration (EPD)



Scan for more information

# Help keep homes comfortable and safe.

Order the new Carlon Blue<sup>®</sup> fan-rated ceiling box today!

## Features

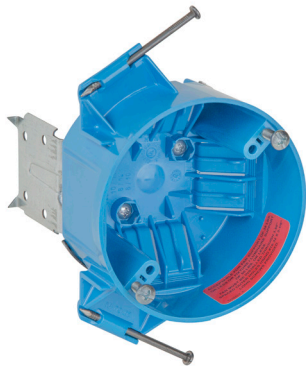
- 2¾" and 3½" spaced light fixture/device mounting holes
- Ceiling fan support with 3½" spaced mounting holes, screws supplied
- Steel bracket has tapped holes for secure fan mounting
- Includes #10-32 screws for fan support (must be used for ceiling fan installation)
- Built-in cable clamps hold wires securely in box
- Fan load rating clearly visible inside box
- Box volume: 20 cu. in.
- Maximum number of wires in box:
  - (10) #14 AWG
  - (8) #12 AWG or #10 AWG

## Ratings

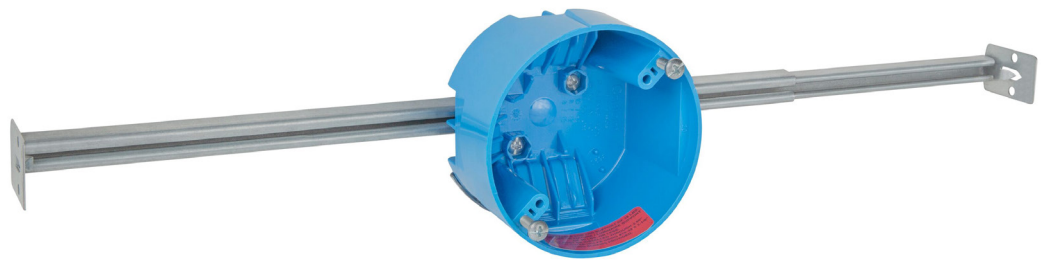
- Fire rating: 2 hours
- Fan support: 35 lb. or less
- Fixture support: 50 lb. or less

## Materials

- Box: Polycarbonate
- Bar hanger: Steel
- Fan support bracket: Steel



B520A-CFB



B620KR-CFB

Carlon Blue fan-rated ceiling boxes for new work



Catalog no.	Description	Std. pkg. qty.
B520A-CFB	Ceiling box with L-bracket	50
B520P-CFB	Ceiling box with L-bracket and ground screw	50
B620KR-CFB	Ceiling box with 14 3/8"–22 1/2" adjustable bar hanger	30
B620KGR-CFB	Ceiling box with 14 3/8"–22 1/2" adjustable bar hanger and ground screw	30

**ABB Installation Products Inc.**  
 Electrification Business  
 860 Ridge Lake Blvd.  
 Memphis, TN 38120

[electrification.us.abb.com](http://electrification.us.abb.com)

ABB has made every attempt to ensure the accuracy and reliability of the contents of this document. However, all content is provided for general informational purposes only, and ABB makes no guaranty or warranty, express or implied, as to the accuracy of any technical content, or that the information contained in this publication will be error free and all such guarantees or warranties are expressly

disclaimed. ABB may change or modify the contents at any time, without prior notice. We reserve all rights in this document and in the subject matter and illustrations contained therein. Any reproduction or utilization of its contents — in whole or in parts — is forbidden without prior written consent of ABB.  
 © 2024 ABB Installation Products Inc. and/or its related companies All rights reserved