

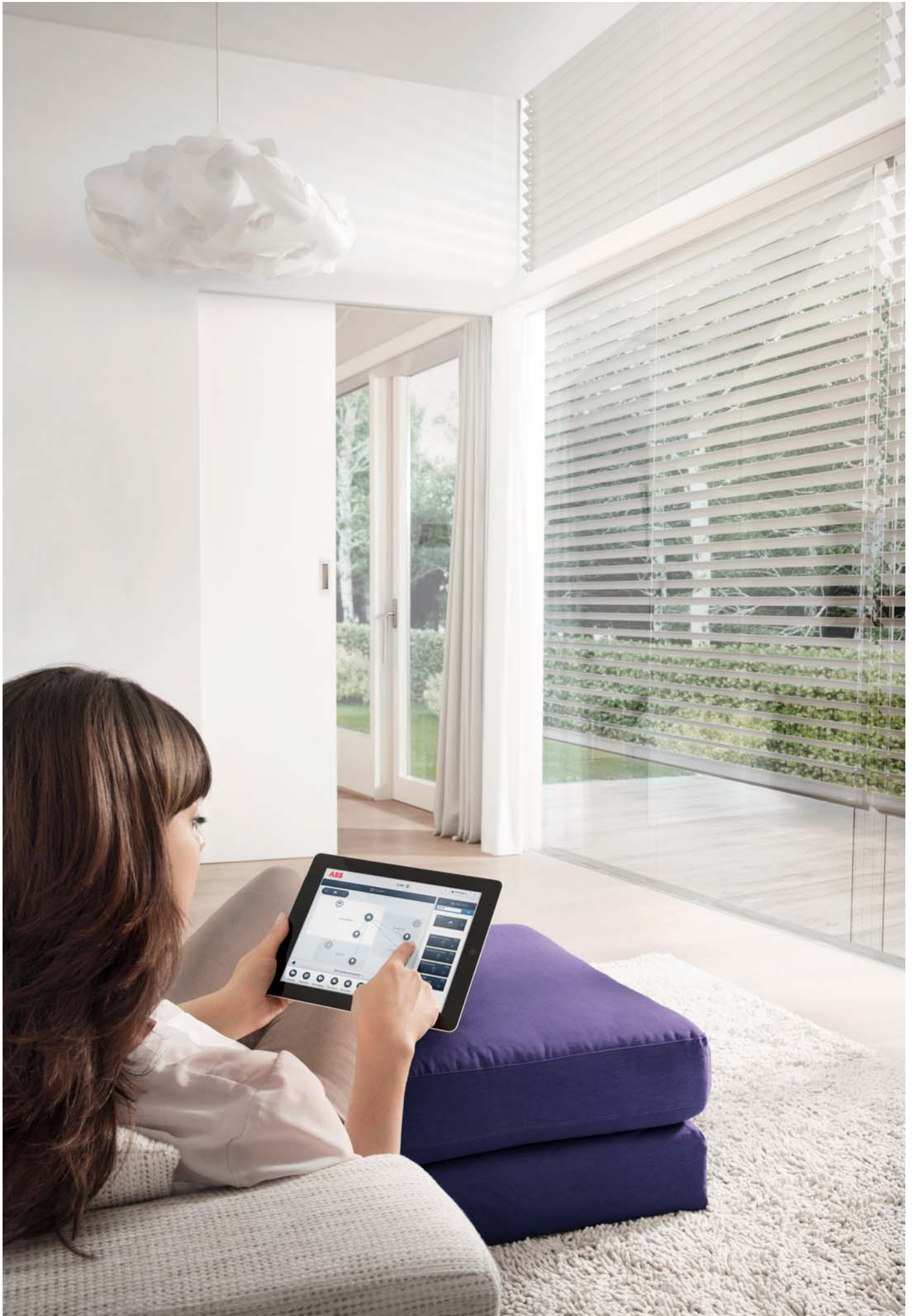


ABB-free@home[®]
Making home automation
easier than ever



Freedom is a wonderful feeling, as is taking charge of your life. Give your home that personal touch and live as your heart desires. That's what ABB-free@home[®] offers, home automation for those who want freedom.





Controlling your own life

Flexible, simple and secure for the future



Practical for everyday use. With ABB-free@home[®], your home can be controlled with switches or via smartphone, tablet or computer. The system can continuously adapt to changing requirements, thus ensuring security by futureproofing your home.

Contents



The freedom

Intelligent home 10

Total networking 12



The possibilities

Personal comfort scenes 18

Presence simulation 20

The everything-off function 22

The entire house under control 24

Easy to operate 26

Easy set-up 28



The advantages

Planning and practice 32

The range

Individual solutions

34



Liberating. As innovative home automation, ABB-free@home® offers endless possibilities for creative design. This allows the home to be equipped with endless personal concepts and preferences. Both today and in the future.





Free choice To live life as desired

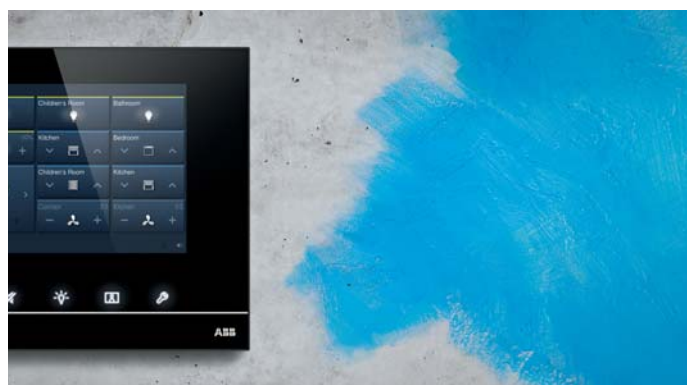


Smart. ABB-free@home® transforms the home into an intelligent home. With blinds, lights, heating, air-conditioning and door communication – comfort, safety and efficiency can finally be controlled remotely, via a smartphone or tablet.



Many advantages for operation

More comfortable living. ABB-free@home® makes daily life easier. With the right app, you can use your smartphone or tablet as a remote control for your home. You can raise the



Open for new ideas

With ABB-free@home® all functions in the home can be managed automatically – according to time schedule, temperature and movement detector – or be called up at the touch of a button. Every combination of the various functions is possible.

-  Blinds
-  Light
-  Heating
-  Air-conditioning
-  Door communication

blinds without leaving your bed and switch on the radio in the kitchen – or switch off all the lights and appliances at once when you leave the house. Setting these scenes is simple. Simply comfortable. Simply practical. Simply energy-efficient.

Total network

Blinds, lights, heating, air-conditioning and door communication

Comfortable right from the start. It begins with the installation and continues when used as a part of daily life.

With ABB-free@home® all applications in the home are amazingly easy to combine.

Blinds

Whether blinds, roller blinds, awning or roller door – with ABB-free@home®, sun protection and energy-saving could not be easier. Opening and closing as well as adjustment of slats can be controlled with a switch, or an app for smartphone or tablet. In addition, a conventional weather station can be used for protection during a storm, a timer or astro function can be used. It automatically adjusts the blinds according to sunrise and sunset.

- » Flexible options for control
- » Storm, rain and wind protection which responds to the weather
- » Simple operation
- » Optimised energy efficiency due to improved insulation when the blinds are lowered
- » Optimum timing



Blind switch

Ready for all operating modes. With either a short or a long press of the button for roller blinds, exterior blinds or awnings as well as adjustment of slats. Together with a wind sensor the roller blinds, exterior blinds and awnings close up completely and are locked during high winds.

Light control

Life begins with light. With ABB-free@home® lighting can be optimally used, whether for illuminating individual rooms or the entire house. With light scenes – for different moods and to suit the occasion. A benefit of this is the cost-saving and environmentally friendly use of energy.

- » Easy-to-adjust light scenes
- » Central or remote control
- » Fast activation of emergency lighting
- » Support of energy efficiency
- » Flexible use



Dimmer and movement detector

With ABB-free@home®, rooms and buildings can be illuminated according to requirements. Each situation receives suitable light – whether striking light scenes or emergency lighting. All lights can be switched on at once.



Heating and air-conditioning

Providing comfort and energy-saving. The optimum room temperature can be adjusted with ABB-free@home® according to the specific requirement, depending on the time of day and the function of the room. In ECO mode, the temperature is automatically lowered at night or when the house is empty. The heating can be automatically shut off when a window is open, this reduces the consumption of energy – whether for conventional heaters or in floor heating. The temperature can

be perfectly adapted to your personal rhythm of life. In the morning, the bathroom is already preheated. During the day, the rooms are unheated when no one is home. And when you get home at night, a comfortable living room awaits.



- » Heating to suit specific requirements
- » For heaters or in floor heating
- » Support of energy efficiency
- » ECO mode
- » Local operation or remotely controlled via app for smartphone and tablet
- » Automatic deactivation when a window is open



- » Large touch display (7"), to recognise who is at the door
- » Easy operation keys for opening doors, mute function and light
- » Integrated picture memory
- » Configuration of "Welcome scenes" when a visitor rings the bell or the door is unlocked

Door communication

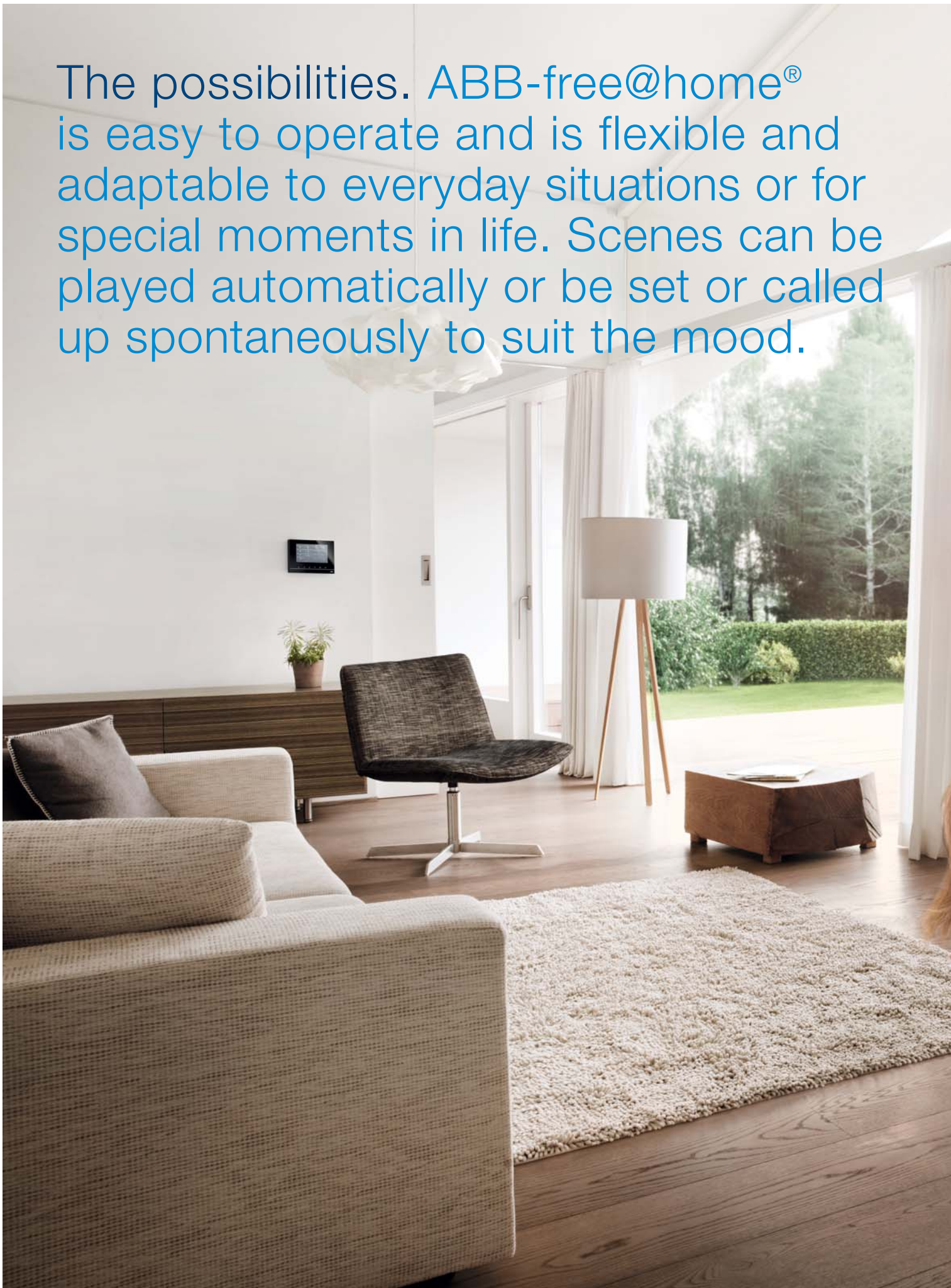
The ABB-Welcome M door entry system can be integrated into ABB-free@home®. The door communication and home automation can be used together with ABB-free@homeTouch 7". The light switches on when the doorbell rings to see visitors more clearly. For security reasons, the video camera records pictures of visitors at the door when no one is home.



Picture directly on the display

Practical and convenient. The picture from the video camera can be displayed on the tablet or smartphone via the Welcome app. This allows visitors who ring the bell to be recognised even when you are not at home (requires ABB-Welcome M IP gateway and an ABB-Welcome M outdoor video station).

The possibilities. ABB-free@home® is easy to operate and is flexible and adaptable to everyday situations or for special moments in life. Scenes can be played automatically or be set or called up spontaneously to suit the mood.

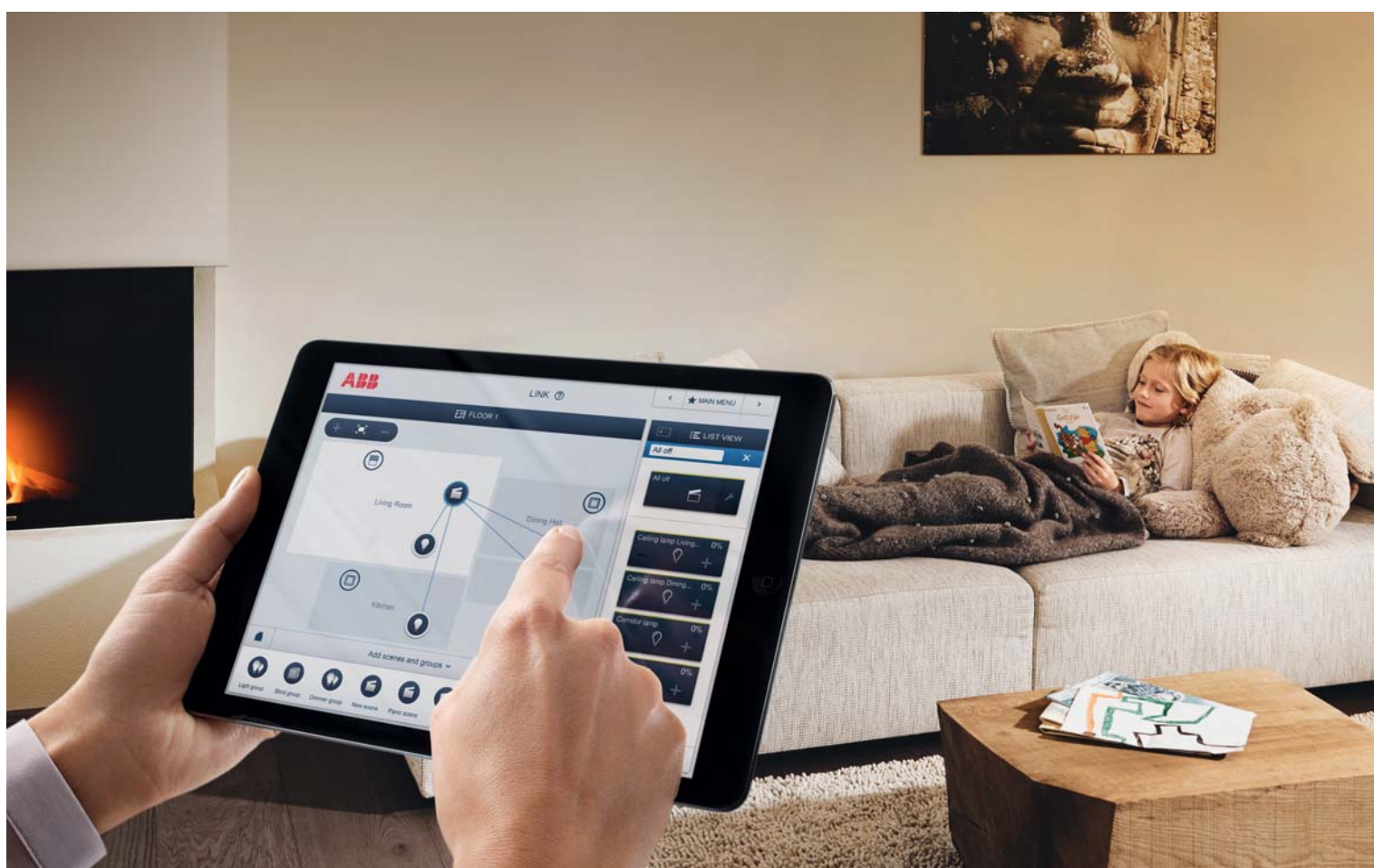




Atmosphere at the touch of a button

With a personal comfort scene

The perfect evening after a day at work. ABB-free@home® prepares a pleasant environment when arriving home, with a colourful display of light and ambient room temperature. Precisely the right atmosphere for relaxing.

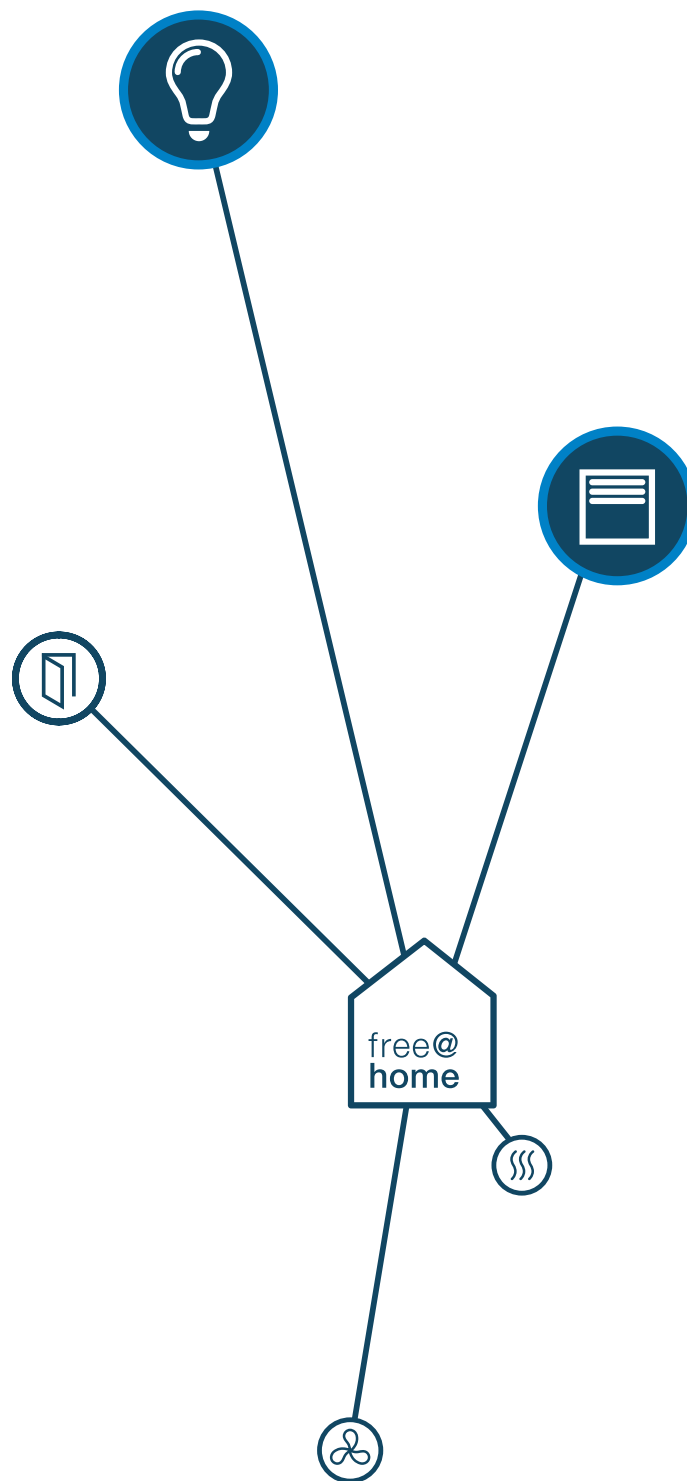


Fast change of scenes

With a single press of the button on either the switch, the ABB-free@homeTouch, smartphone or tablet calls up a scene. This allows a living room to be transformed in a matter of seconds to suit an occasion – for welcoming guests or for a pleasant evening of relaxation.

Simply one's own scenes

To create or change individual scenes is as easy as child's play with ABB-free@home®. An intelligent assistance function helps to put together the desired tasks. Lamps and a specific position of the blinds plus room temperature can be called up at the press of a button.

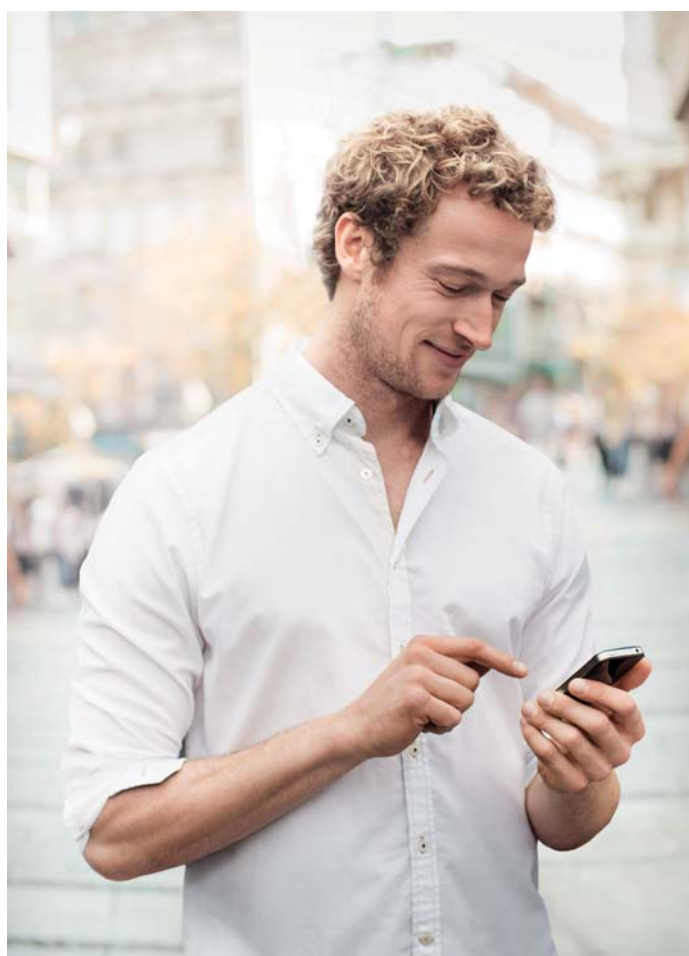


Networking as desired. Different functions can be combined for scenes.

Present and yet not at home

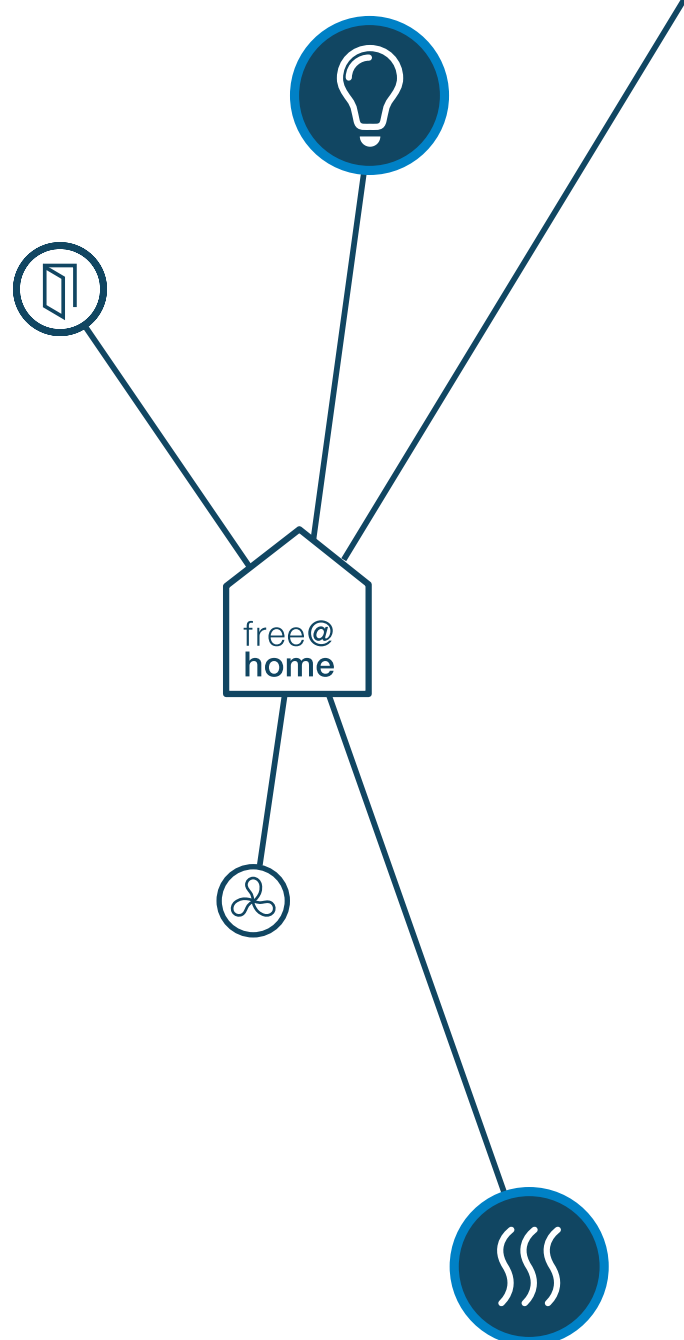
Presence simulation

Everything in perfect order at home. ABB-free@home® can bring life into rooms that are unoccupied. The system stores the habits of the residents while they are at home and then calls them up during their absence.



Remote control for everything

Always a good feeling. The presence simulation of ABB-free@home® records the weekly operating sequence of the devices. This means that its response is completely the same whether the residents are present or absent due to a business trip, away for holidays or gone shopping. Using the app on the smartphone, a safety check of the home is possible from a remote location anywhere in the world.





Presence simulation

For greater safety. With ABB-free@home® the home appears to be occupied even when no-one is at home. Whether in the evening when visiting the theatre or during a holiday lasting a few weeks – the system can mimic the daily routine of the residents. Such simulation helps to prevent break-ins.

Automatic weather protection

During windy weather or storms, ABB-free@home® together with a conventional weather station takes care of the independent upward movement of the blinds. This prevents damage such as buckling of the slats or broken windows. This function is of particular benefit when no-one is at home because weather can change unexpectedly.

Everything off with a single function Absolutely

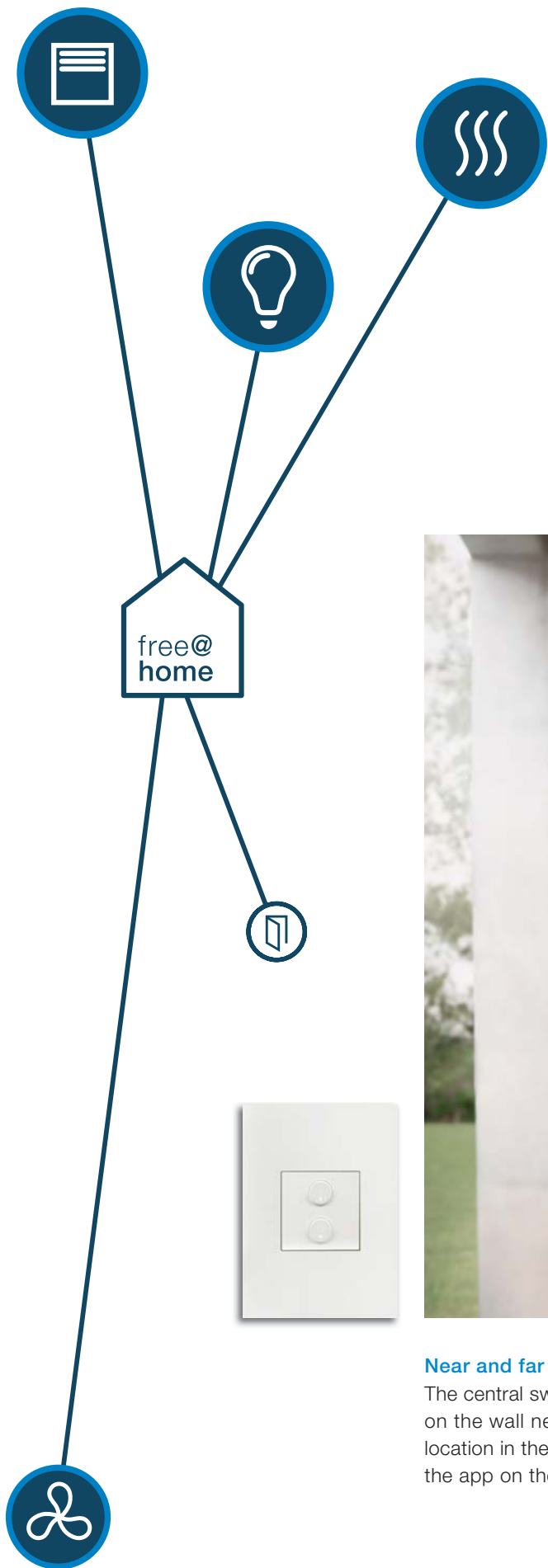
The simplest type of switch-off. ABB-free@home® offers it with the all-off function. It is especially useful when leaving the house. It simultaneously switches off all networked devices in all rooms.



Be assured

In principle the all-off function works just like a preset scene. All networked devices are simultaneously switched off in all rooms. Aside from safety, this also benefits energy efficiency.

The all-off function is especially practical at the bedside. Before falling asleep the entire lighting in the house can be switched off with just a press of a button. A very practical function to ensure comfort and safety.

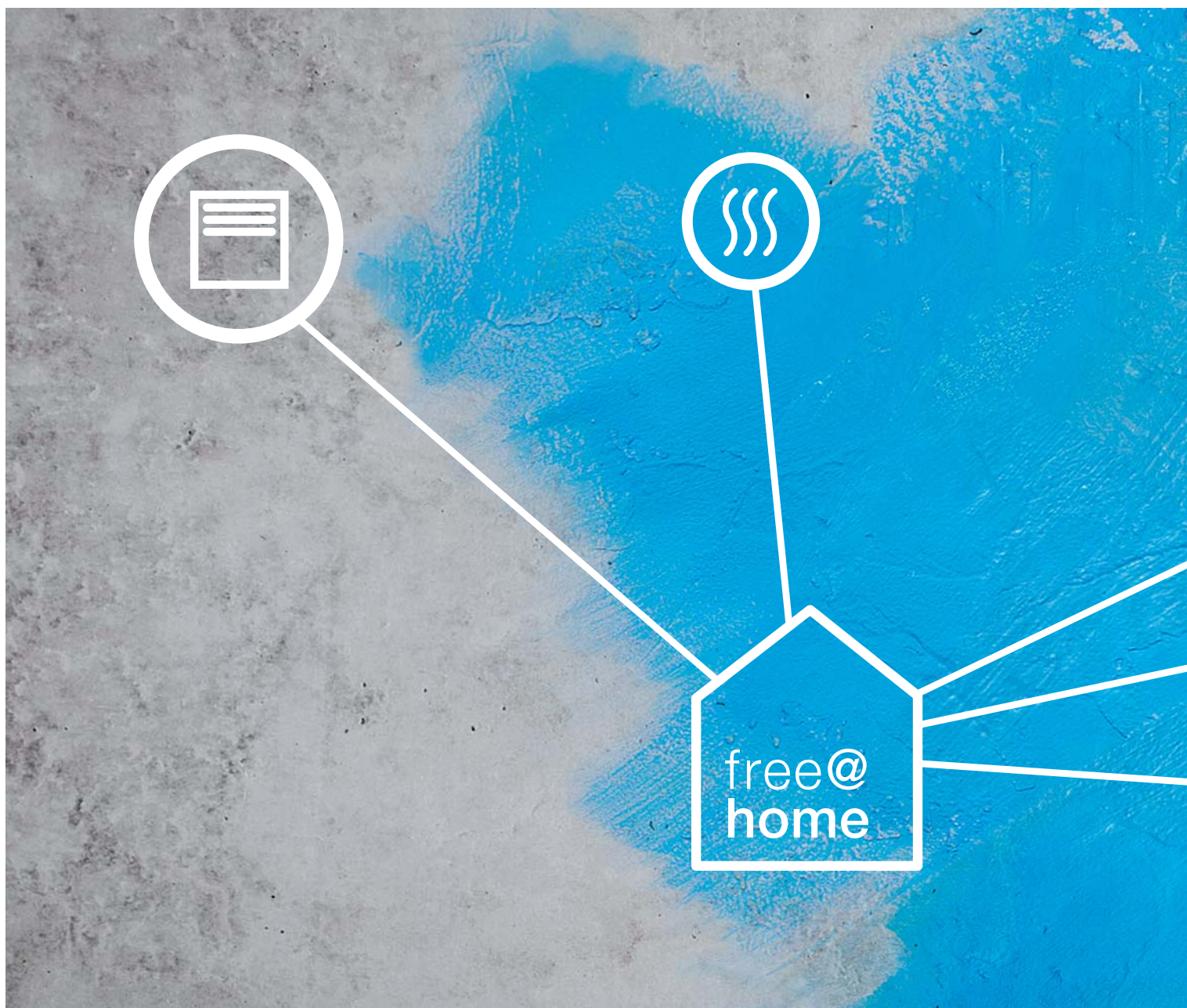


Everything off. Stove, lights, heating, television or the iron in absence mode. A reassuring feeling.



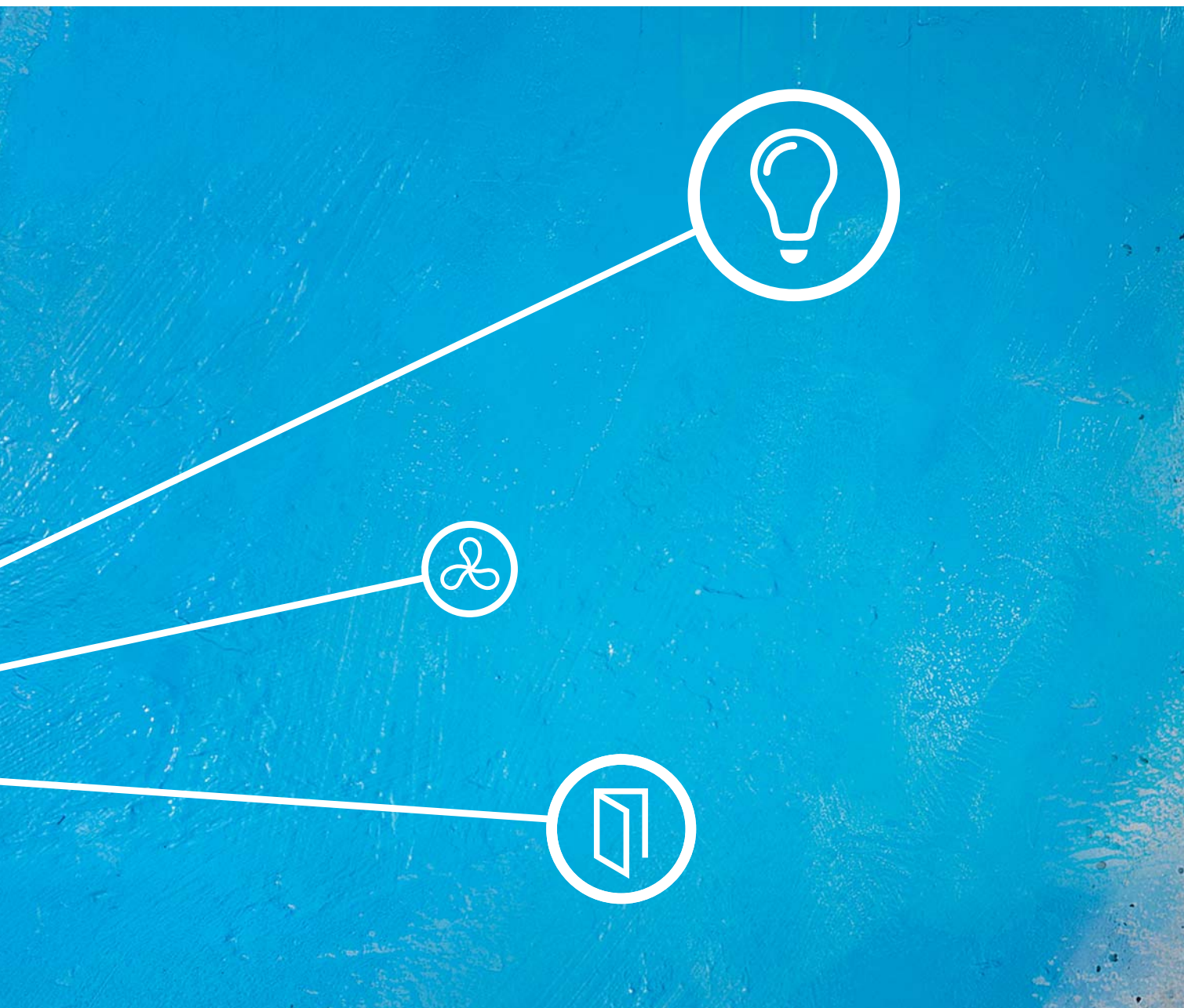
Near and far

The central switch for the all-off function can be located on the wall near the front door and, of course, at any other location in the house. For mobile use it can be displayed in the app on the smartphone or tablet.



The entire house under control Simply in the network

Comfortable and user-friendly. ABB-free@home[®] is very easy to operate. It enables blinds, lighting, heating, air-conditioning and door communication to be controlled from near and far via computer, tablet or smartphone. And with the ABB-free@homeTouch also from a central location in the house or via a switch on the wall.

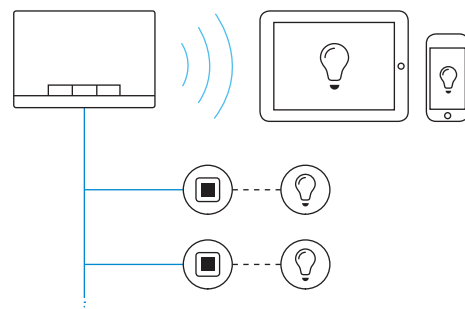


Ready to start immediately

ABB-free@home® can be configured in a fast and cost-saving way. The reason: configuration and operation is as easy as surfing on a website, thanks to the free app. No additional software is required. The initial configuration is performed by the electrical contractor. Later settings and adjustments can be made by the user from any computer or tablet, with HTML5 independent of platform.

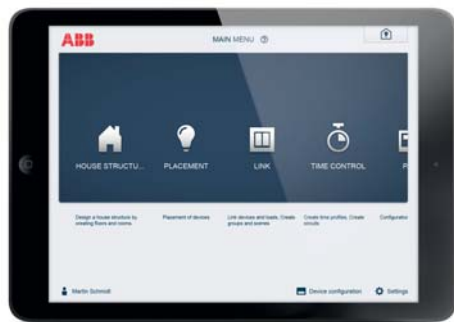
Perfectly connected

The 2-wire bus technology allows the System Access Point to be connected with different input devices. Via the connection of a conventional internet router the home can be controlled with a mobile device from anywhere in the world.



One pointer is sufficient For the app that is extremely easy to operate

Home automation has never been easier with the ABB-free@home® app. It is suitable for controlling everything in the networked house. Making adjustments is as simple as surfing the Internet.

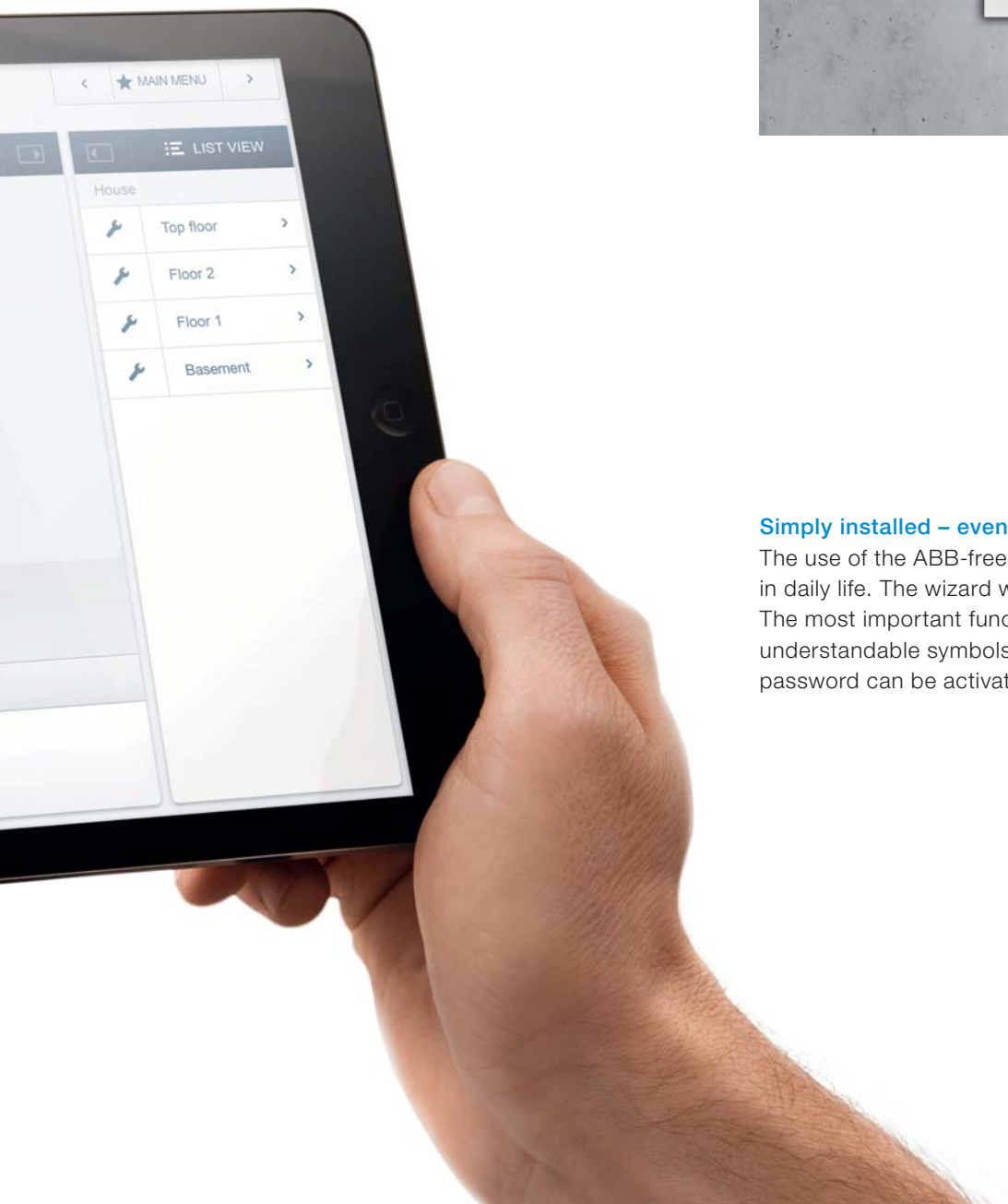


Everything is possible

The unique user interface has been developed especially for ABB-free@home®. It can be used via the Internet browser on a PC or laptop as well as on smartphone and tablet. An app which adapts the user surface to the mobile operation (iOS/Android) has been developed especially for use with smartphone or tablet.



- » Easy to install
- » Easy to configure
- » Easy to change later
- » Intuitive operation



Simply installed – even simpler to use

The use of the ABB-free@home® app is optimised for use in daily life. The wizard will guide you through the system. The most important functions are explained very clearly with understandable symbols. For maximum security, a personal password can be activated at registration.

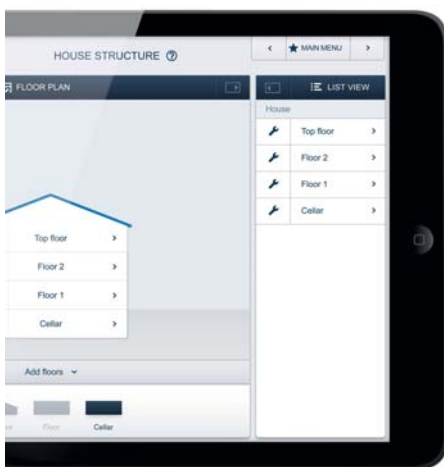
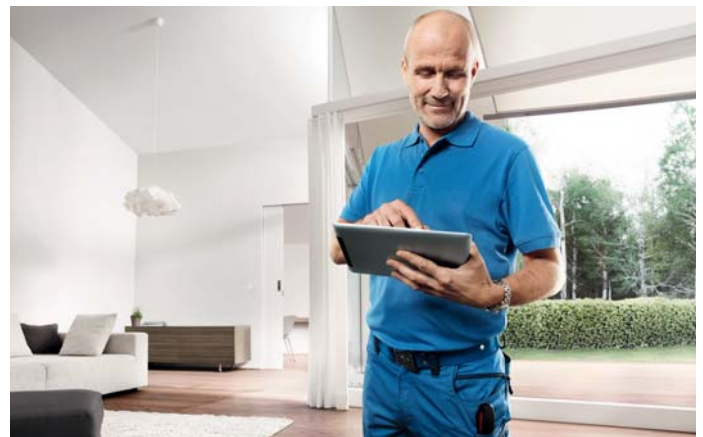
As easy as shifting your armchair

Easy set-up

Intuitive operation. The ABB-free@home® app is easy to understand. To start with, all available devices are visible on the display, allowing favourite settings to be made immediately via drag-and-drop.

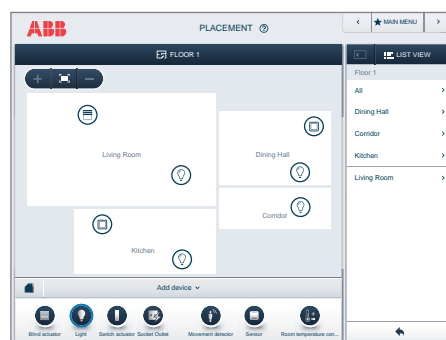
Simple and time-saving

The electrical contractor performs the initial configuration of the system by app. Operation is particularly fast and saves installation costs.



House structure

First the electrical contractor sets up the floor plan with its floors and rooms.



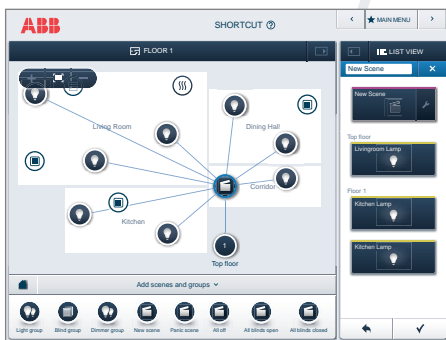
Placement

Then all devices in the app are integrated in the floor plan and assigned in the system.



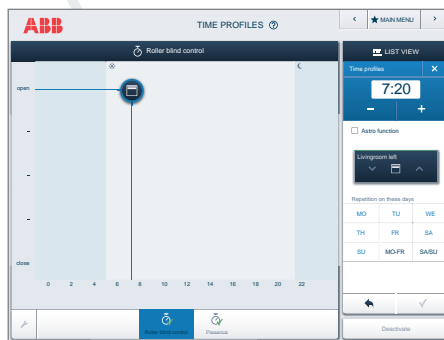
Link

And finally, the elements can be combined according to wish and requirement.



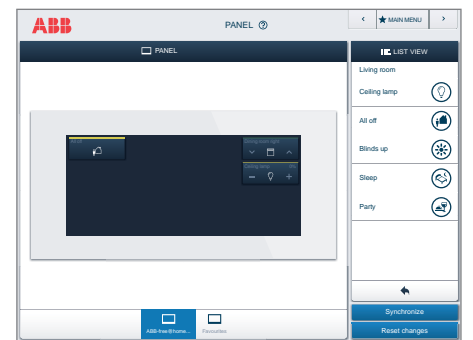
Scene control

The user can easily combine existing switches and appliances into personal scenes in every room. A lighting scene, for example, for an evening on the couch.



Time control

Roller blinds can be automatically moved and lights can be switched at any time or dependent on sunrise or sunset.



Panel setting

The most important functions can be controlled from a central location in the house and easily changed later, at any time.



Understandable and adaptable

All settings can be changed at any time by anyone – because the functions are self-explanatory. Handling is as simple as any other well-known smartphone or tablet app.



Advantages. From planning to efficient operation. Reduced installation time saves costs and the integration sustainably increases the value of any property.



The perfect plan

Possible and affordable

It also impresses professionals. Not only do the numerous functions and unlimited possibilities speak for ABB-free@home[®], the system also distinguishes itself due to the ease with which it can be integrated into every architectural environment.



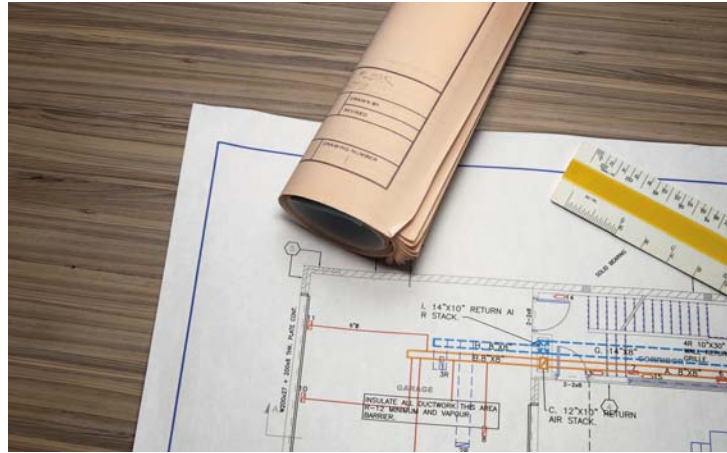
Ideal for new buildings

ABB-free@home[®] requires no additional construction. The walls are already open for the electrical installation – which means that the bus cable can simply be added. The system needs no special cable routings or its own installed cable ducts. Easy to plan for electrical contractors.

Economical right from the start

When compared with conventional home automation ABB-free@home[®] is worth every cent of its price. Due to the reduced effort required during planning and installation the overall costs for ABB-free@home[®] remains affordable. The system saves time and cost, as well as energy during operation.

A safe investment – a global standard



Value-adding and energy-saving

ABB-free@home® raises the value of real estate due to the increase in comfort and improved energy efficiency. The installation cost soon pays for itself. When compared to the total cost of a newly constructed house it generally amounts to around 1%. Energy use can be reduced with ABB-free@home®. With intelligent blind control the optimum room temperature can be maintained using less energy. Generally reducing the room temperature by 1°C saves around 6% of energy.

Always affordable

For a three bedroom home, an ABB-free@home® system including switching and dimming of lights, scene and group controls, time schedules and smart device controls can already be implemented from \$5,000, plus the costs for the standard installation, such as the provision of cable and outlets and commissioning by an electrical contractor.



Environmentally friendly with certificate

All devices for ABB-free@home® are manufactured ecologically compatible – according to the RoHS ordinance.

The range

Modularity makes everything possible



System Access Point

features	<ul style="list-style-type: none">» The control centre of the ABB-free@home® system» For installation and remote control of the ABB-free@home® system» It provides access for computer, tablet or smartphone via WLAN» Allows the execution of Astro and time programs» Installation and remote control is executed via the Web interface or app» No additional installation software is required» Easy installation via WLAN ad hoc mode	<ul style="list-style-type: none">» Connection to the home network via WLAN client mode or via CAT cable» The functions of the system can be defined by the electrical contractor and also remotely controlled by users» For installation, the System Access Point makes available its own WLAN and the software required for project planning and installation» The electrical contractor is not dependent on the structural conditions and needs no additional software
----------	---	--



ABB-free@homeTouch 7"

features	<ul style="list-style-type: none">» For ABB-free@home® and ABB-Welcome M» High-quality colour TFT touch display with a resolution of 800 × 480 (WVGA)» For the central control of up to 16 configurable functions and display of the video image of an ABB-Welcome M outdoor station» SD card slot for extension of the picture memory» Suitable as room temperature controller extension unit» For surface mounting
----------	---

Zenit range



01

02

03

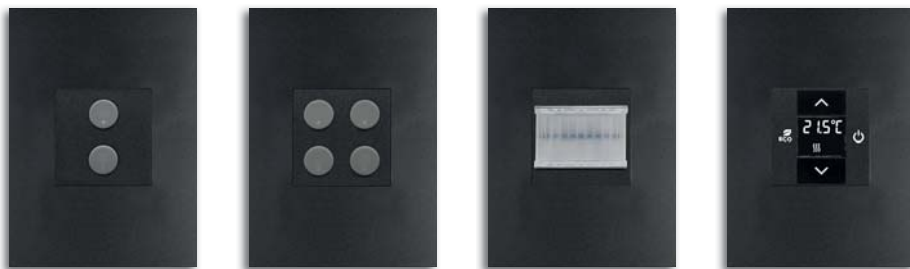
04

01 Switch unit 1/2gang, white

02 Switch unit 2/4gang, white

03 Movement detector unit, white

04 Room thermostat unit, white



05

06

07

08

05 Switch unit 1/2gang, anthracite

06 Switch unit 2/4gang, anthracite

07 Movement detector unit, anthracite

08 Room thermostat unit, anthracite



09

10

11

12

09 Switch unit 1/2gang, silver

10 Switch unit 2/4gang, silver

11 Movement detector unit, silver

12 Room thermostat unit, silver



13

14

15

16

13 Switch unit 1/2gang, champagne

14 Switch unit 2/4gang, champagne

15 Movement detector unit, champagne

16 Room thermostat unit, champagne



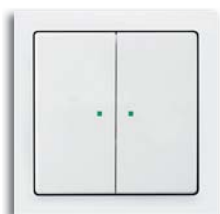
Switches, including the following interchangeable icons:
blind, light, dimmer and scene.



future® linear range



01



02



03



04



05



06



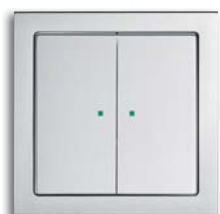
07



08



09



10



11



12

01 Switch, 1/2gang, studio white

02 Switch, 2/4gang, studio white

03 Movement detector, studio white

04 Room thermostat, studio white

05 Switch, 1/2gang, anthracite

06 Switch, 2/4gang, anthracite

07 Movement detector, anthracite

08 Room thermostat, anthracite

09 Switch, 1/2gang, aluminium silver

10 Switch, 2/4gang, aluminium silver

11 Movement detector, aluminium silver

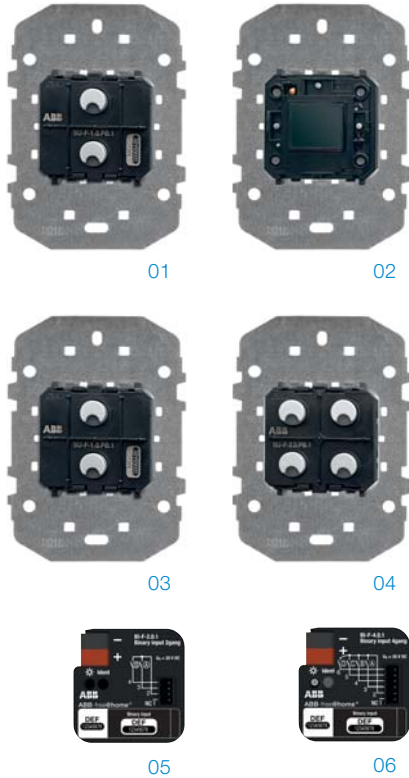
12 Room thermostat, aluminium silver



Rockers, including the following icons:
blind, light, dimmer and scene.



Technical accessories



Flush-mounted devices

ABB-free@home® makes available different flush-mounted devices for switching and controlling of signals, such as light and temperature. They allow the desired functions to be installed as easily as a socket outlet.

Zenit

- 01 Switch / Relay, 1/2gang + 1 relay
- 02 Room thermostat
- 03 Switch 1/2gang
- 04 Switch 2/4gang

Binary Inputs

- 05 Binary input, 2gang, flush-mounted
- 06 Binary input, 4gang, flush-mounted

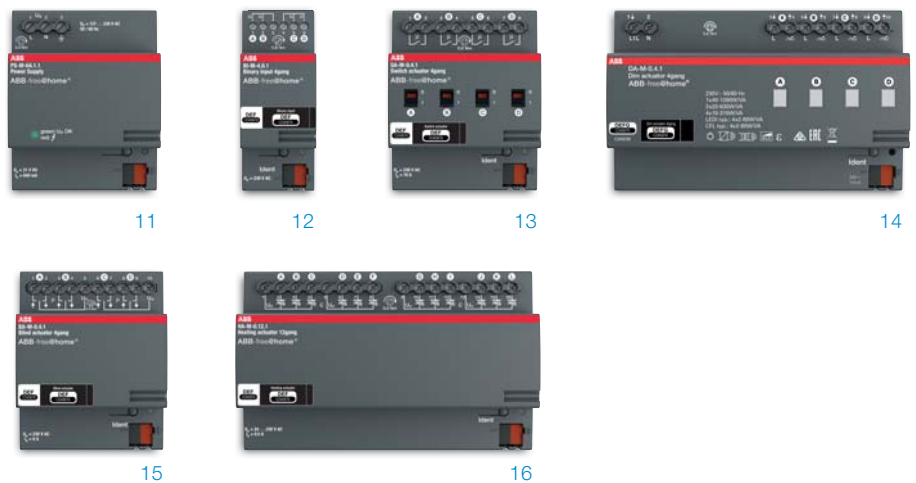
future® linear

- 07 Switch / Relay, 1/2gang + 1 relay
- 08 Room thermostat
- 09 Switch, 1/2gang
- 10 Switch, 2/4gang



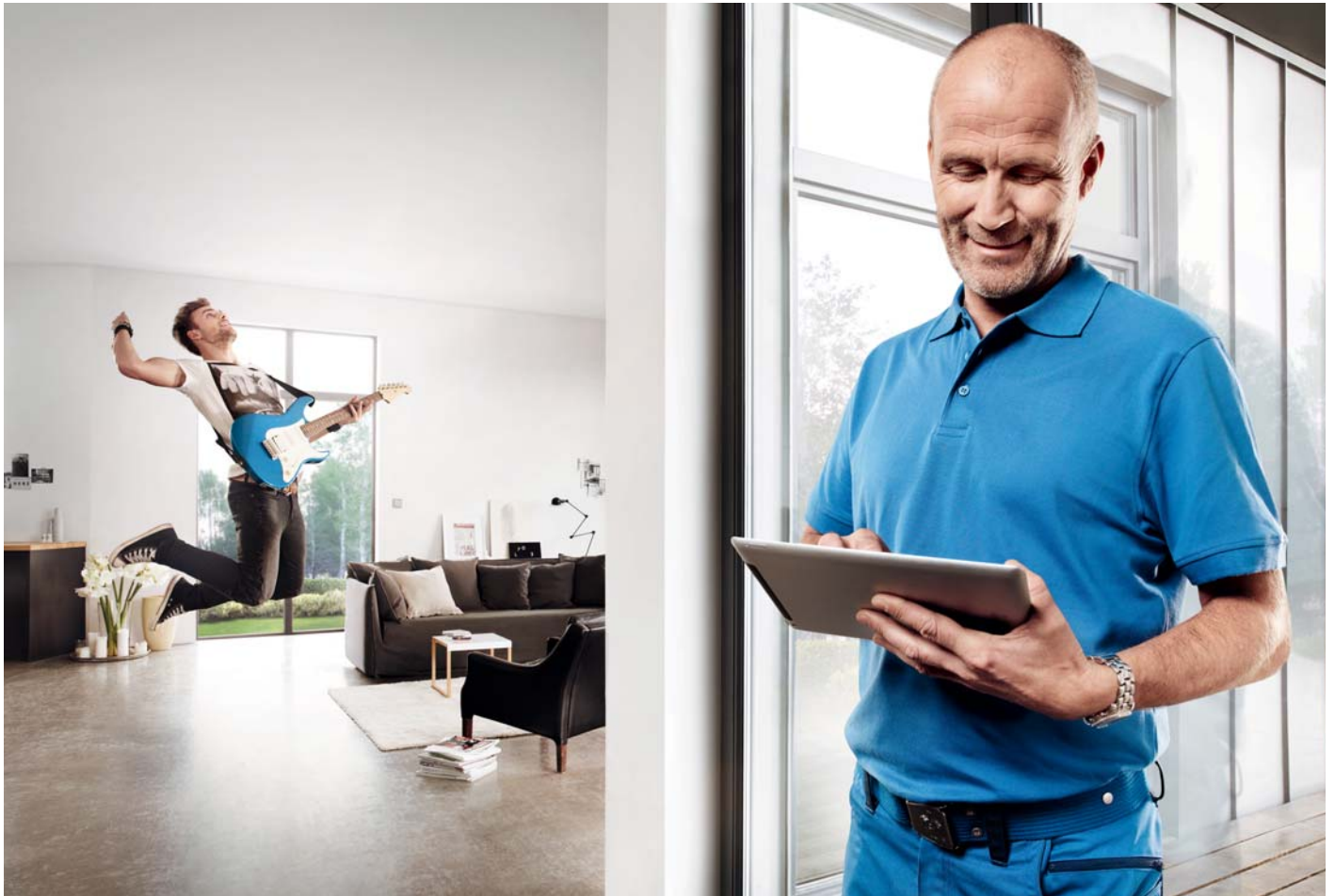
Output Units

The ABB-free@home® output units receive the signals from switches and other input devices and convert them. They are able to move the blinds down or lower the temperature of the heating. The output units are installed centrally in the consumer unit.



- 11 Power supply
- 12 Binary Input, 4gang
- 13 Relay, 4gang

- 14 Universal dimmer, 4gang
- 15 Blind / Shutter relay, 4gang
- 16 Electronic relay for valves, 12gang



Communicative and competent The ABB partner close to you

Advice and assistance close to you. Additional information regarding ABB-free@home[®] and individual consultation can be obtained from a local electrical contractor.

Contact us

ABB Australia Pty Limited

For enquiries

Phone: 1800 602 020

E-mail: abb.lvp.sales@au.abb.com

New South Wales

1 Bapaume Road,
Moorebank, NSW 2170

Queensland

36 Archerfield Road,
Darra, QLD 4076

Victoria

601 Blackburn Road,
Notting Hill, VIC 3168

Western Australia

2 Metal Circuit,
Malaga, WA 6090

www.abbaustralia.com.au

Note: We reserve the right to make technical changes or modify the contents of this document without prior notice. With regard to purchase orders, the agreed particulars shall prevail. ABB does not accept any responsibility whatsoever for potential errors or possible lack of information in this document.

We reserve all rights in this document and in the subject matter and illustrations contained therein. Any reproduction, disclosure to third parties or utilization of its contents – in whole or in parts – is forbidden without prior written consent of ABB.

Copyright © 2015 ABB
All rights reserved