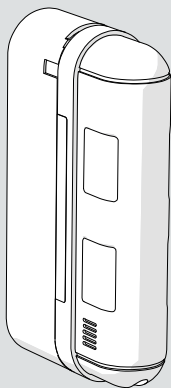


Busch-/ABB-secure@home

**ABB- SMD-W4.1A
2CSYD0202B**



DE Dual-PIR Außen-Bewegungsmelder bidirektionale

EN Perimeter bidirectional dual PIR motion detector

NL Dual IR bidirectionele raam/deurdetector

FR Détecteur périmétrique 2 IR 2 directions d'extérieur

IT Rivelatore perimetrale 2 IR 2 direzioni da esterno

ES Detector perimétrico 2 IR 2 direcciones para exterior



Inhalt der Verpackung

Installation

Programmierung

Einstellung

Package contents

Installation

Programming

Adjustment

Inhoud verpakking

Installatie

Programmering

Afstelling

Contenu emballage

Installation

Programmation

Réglage

Contenuto imballo

Installazione

Programmazione

Regolazione

Contenido del paquete

Instalación

Programación

Regulación



Prüfung

Gebrauch und Funktion

Wartung

Reset

Testing

Use and Operation

Maintenance

Reset

Keuring

Gebruik en werking

Onderhoud

Reset

Essais

Utilisation et
Fonctionnement

Entretien

Reset

Collaudo

Uso e Funzionamento

Manutenzione

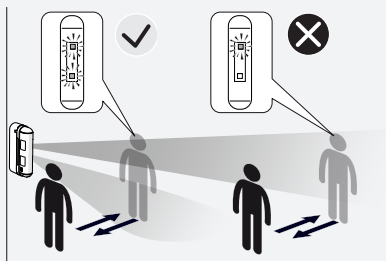
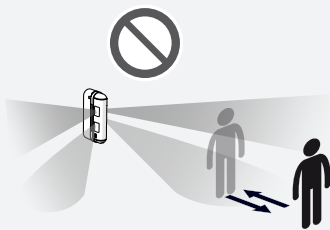
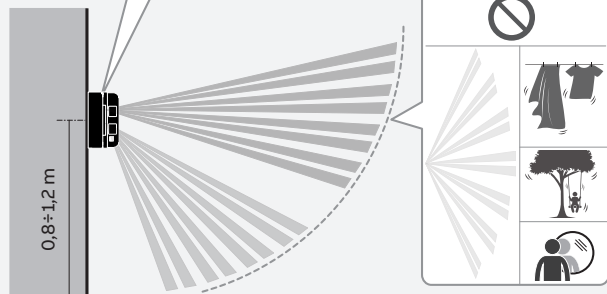
Reset

Prueba

Uso y Funcionamiento

Mantenimiento

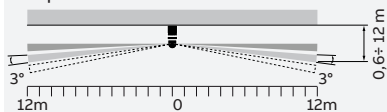
Reset



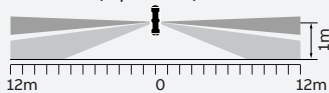
detection distance (detector height 1m)

IR position	standard (m)	real, based on the thermal conditions of the environment
A	12,0	10,0 ... 15,0
B	8,0	6,0 ... 10,0
C	5,0	4,0 ... 6,0
D	2,0	4,0 ... 6,0

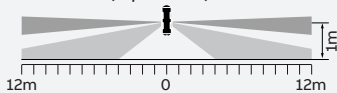
top view



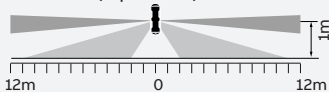
side view (A position)



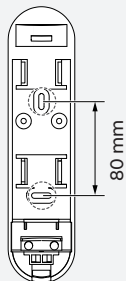
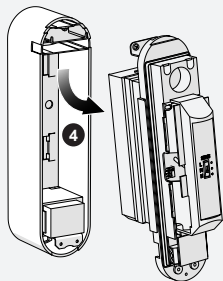
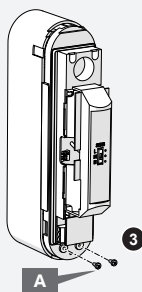
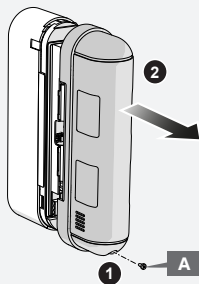
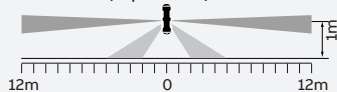
side view (B position)

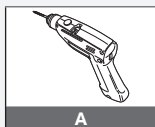
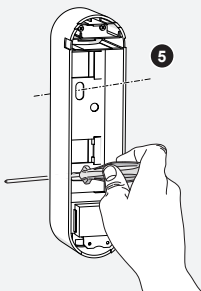


side view (C position)

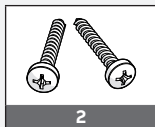


side view (D position)

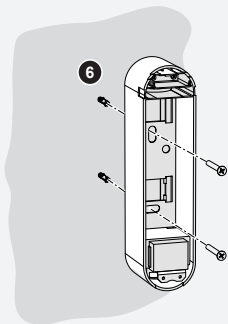




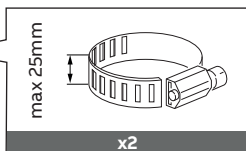
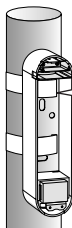
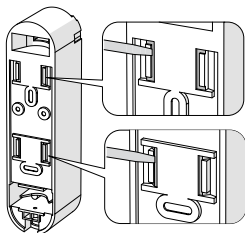
A



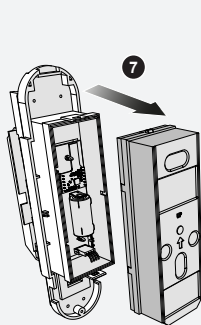
2



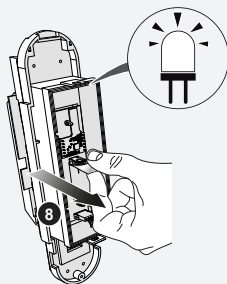
6



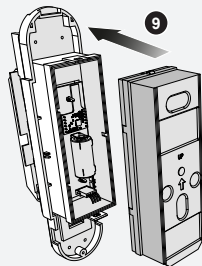
Optional • Optional • Optioneel • En option • Opzionale • Opcional



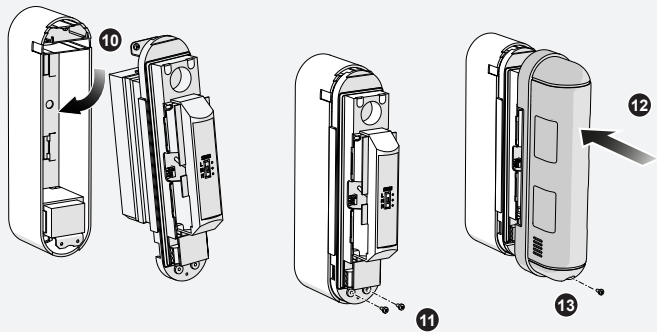
7



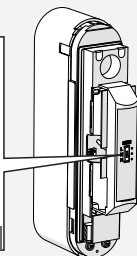
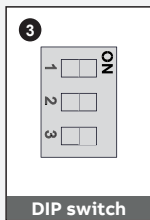
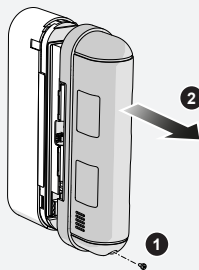
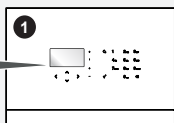
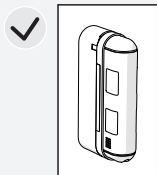
8

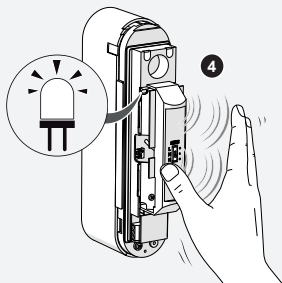


9



3





DE

Switch	Werte	Funktion
1	ON	Test modus.
	OFF (*)	Normaler Betrieb.
2	ON	Battery saving: Verhinderung: Für jeden Zeitraum von 5 Sekunden wird nur ein Alarm erzeugt, auch wenn es mehrere Erfassungen gab (die Haltbarkeit der Batterie wird verringert).
	OFF (*)	Idem, aber für 120 Sekunden.
3	ON	Zustands-LED aktiv (sie leuchtet bei normalem Betrieb bei jeder Erfassung auf).
	OFF (*)	Zustands-LED nicht aktiv.

(*) Standardeinstellungen

EN

Switch	Values	Function
1	ON	Test mode.
	OFF (*)	Standard operation.
2	ON	Battery saving: only one alarm every 5 seconds is generated even if multiple detections occurred (the battery duration is reduced).
	OFF (*)	Idem, but every 120 seconds.
3	ON	Active LED (it turns on for each detection during the standard operation).
	OFF (*)	Inactive LED.

(*) Default settings

Switch	Waarden	Functie
1	ON	Test modus.
	OFF (*)	Normale werking.
2	ON	Battery saving: Uitsluiting: er wordt slechts één alarm gegenereerd voor elke periode van 5 seconden, zelfs als er meerdere detecties zijn geweest (de levensduur van de batterij wordt verkort).
	OFF (*)	Hetzelfde, maar met een periode van 120 seconden.
3	ON	Status-LED actief (licht op bij elke detectie tijdens normale werking).
	OFF (*)	Status-LED niet actief.

(*) Standaard instellingen

Switch	Valeurs	Fonction
1	ON	Mode Test.
	OFF (*)	Fonctionnement normal.
2	ON	Battery saving : une seule alarme est produite pour chaque période de 5 secondes, même s'il y a eu des détections multiples (la durée de la batterie est réduite).
	OFF (*)	Idem, mais période de 120 secondes.
3	ON	DIODE d'état actif (s'allume à chaque détection pendant le fonctionnement normal).
	OFF (*)	DIODE d'état désactivé.

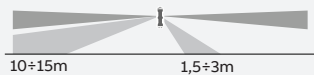
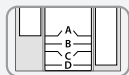
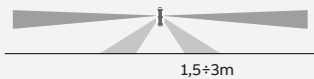
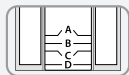
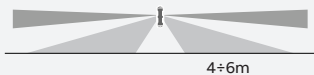
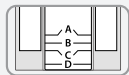
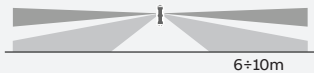
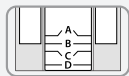
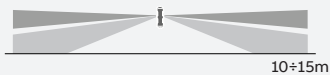
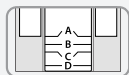
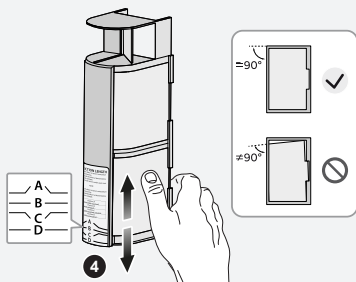
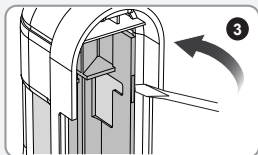
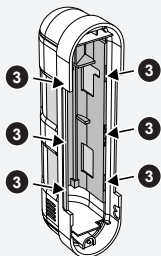
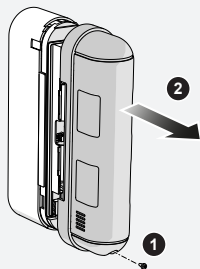
(*) Paramètres par défaut

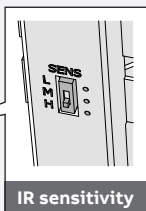
Switch	Valore	Funzione
1	ON	Modalità test.
	OFF (*)	Funzionamento normale.
2	ON	Interdizione: viene generato un solo allarme per ogni periodo di 5 secondi, anche se ci sono state rivelazioni multiple (la durata della batteria viene ridotta).
	OFF (*)	Come ON ma per un periodo di 120 secondi.
3	ON	LED di stato attivo (si accende a ogni rivelazione durante il normale funzionamento).
	OFF (*)	LED di stato disattivo.

(*) Impostazioni di default

Switch	Valores	Función
1	ON	Modalidad test.
	OFF (*)	Funcionamiento normal.
2	ON	Exclusión: se genera una sola alarma para cada período de 5 segundos, aún si existen detecciones múltiples (se reduce la duración de la batería).
	OFF (*)	Ídem, pero para un período de 120 segundos.
3	ON	LED de estado activo (se enciende con cada detección durante el funcionamiento normal).
	OFF (*)	LED de estado desactivado.

(*) Paramètres par défaut

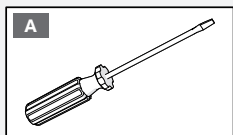
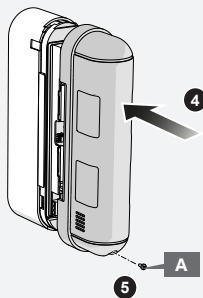
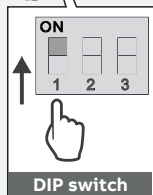
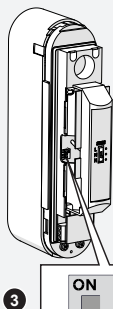
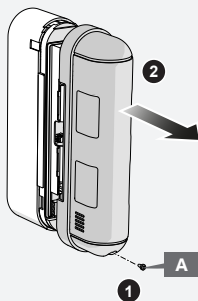
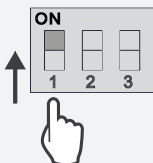


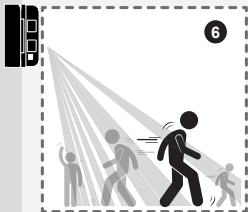


IR sensitivity

Switch	Sensitivity
H	HIGH
M	MIDDLE
L	LOW

5

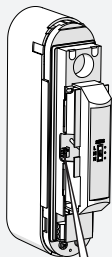
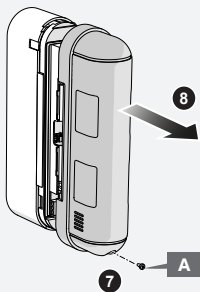




A



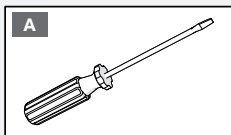
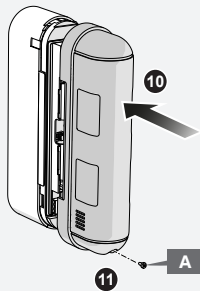
B



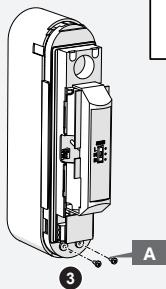
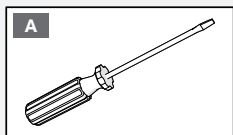
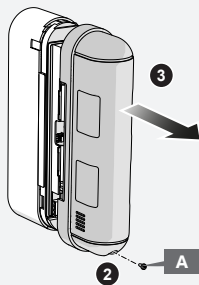
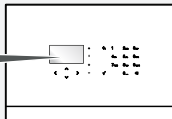
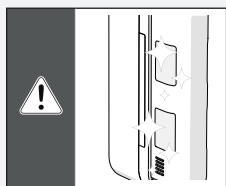
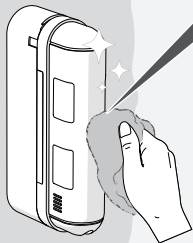
9

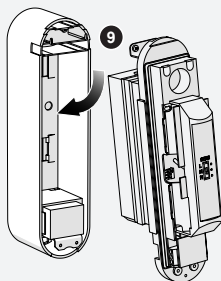
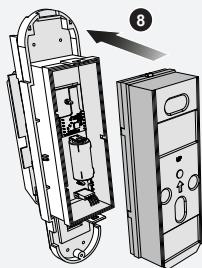
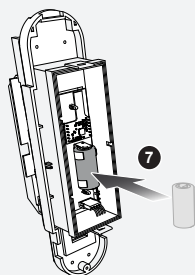
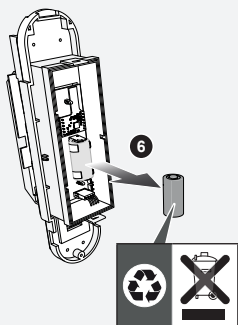
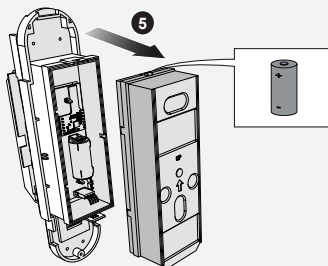
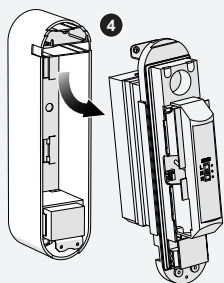


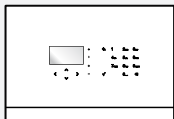
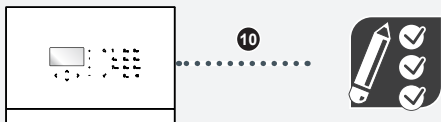
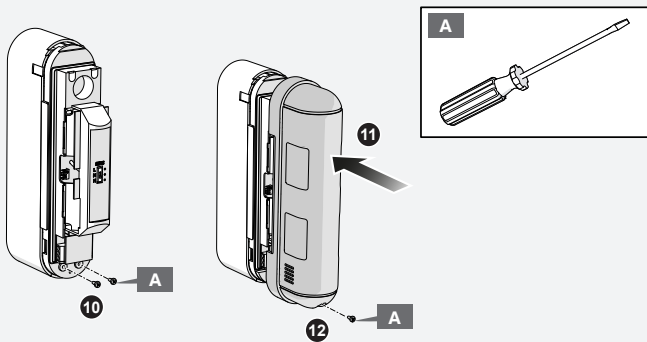
DIP switch



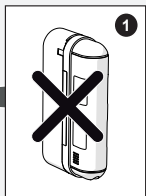
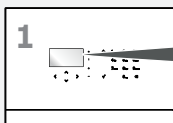
6

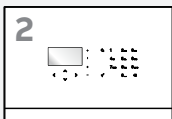
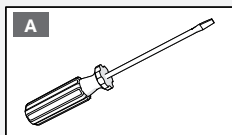
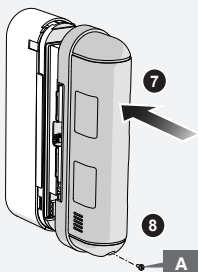
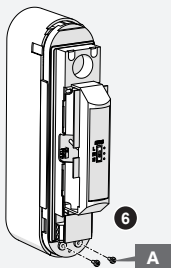
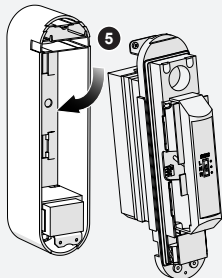
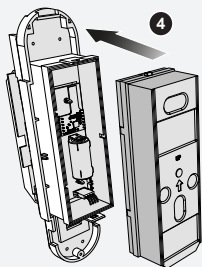
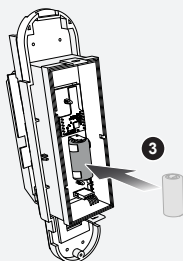
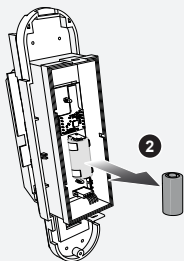






7





Technical characteristics

Application scope	Security
Communication technology	Transmission in FM 868.3 MHz
Range in free field	300 m
Power supply	Lithium battery 3 V – 1.4 Ah lasting 4 years. Operation is guaranteed for 30 days from the low battery notification.
Detection elements	4 IR sensors
Programming elements	1 DIP switch 3-poles 1 sensitivity selector
Signal elements	2 LED. Low battery in the control unit.
Anti-tampering protection	Tamper.
Usage temperature	-20 ... + 50 °C
Usage relative humidity	Max 95% max (non-condensing)
Installation site	Indoor/ Outdoor
Installation	Free
Protection class	IP55
Sizes (L x H x W)	56x235x128
weight	520gr

RED 2014/53/UE
LVD 2006/95/CE
ETSI 300 220
EN 50131-1
EN 50131-5-3

Hereby, manufacturer, declares that the radio equipment type "SMD-W4.1A", "2CSYD0202B", is in compliance with Directive 2014/53/EU. The full text of the EU declaration of conformity is available at the following internet address:



<https://new.abb.com/low-voltage/products/building-automation/product-range/intrusion-alarm-systems/system/abb-secureathome>



Busch-/ABB-secure@home



Busch-Jaeger Elektro GmbH
Freisenbergstraße 2
D-58513 Lüdenscheid
ABB S.p.A.
Viale dell'Industria, 18
20010 Vittuone (MI), Italy