

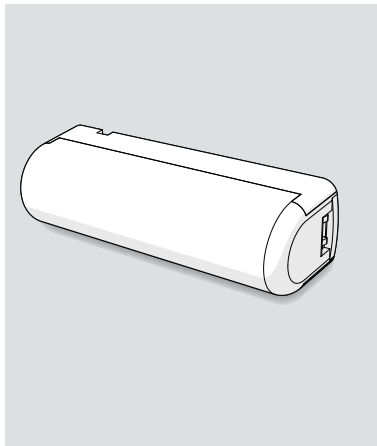
Busch-/ABB-secure@home

Busch- SMC-W1.11c



H121003

ABB- SMC-W1.1c
2CSYD0104c



DE Fenstermelder

EN Perimeter Magnet Reed Contact Detector

NL Perimeter Raam-/deurdetector

FR Détecteur magnétique périmétrique

IT Rivelatore perimetrale magnetico

ES Detector magnético perimetral



Inhalt der Verpackung

Installation

Programmierung

Einstellung

Package contents

Installation

Programming

Adjustment

Inhoud verpakking

Installatie

Programmering

Afstelling

Contenu emballage

Installation

Programmation

Réglage

Contenuto imballo

Installazione

Programmazione

Regolazione

Contenido del paquete

Instalación

Programación

Regulación



Prüfung

Gebrauch und Funktion

Wartung

Reset

Testing

Use and Operation

Maintenance

Reset

Keuring

Gebruik en werking

Onderhoud

Reset

Essais

Utilisation et
Fonctionnement

Entretien

Reset

Collaudo

Uso e Funzionamento

Manutenzione

Reset

Prueba

Uso y Funcionamiento

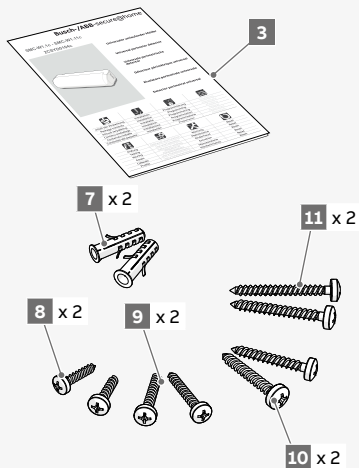
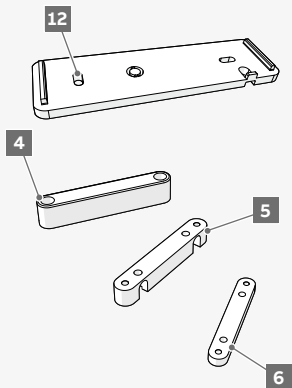
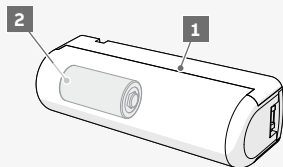
Mantenimiento

Reset

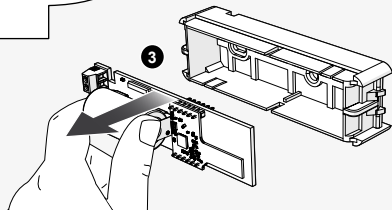
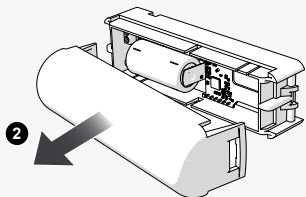
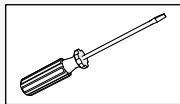
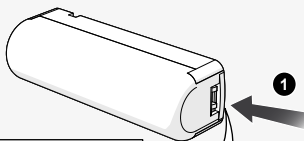
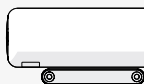
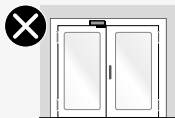
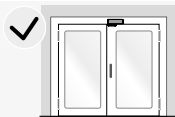
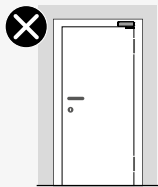
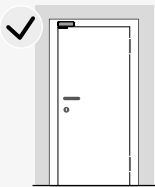
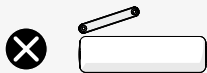
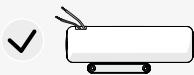
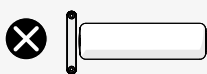
1

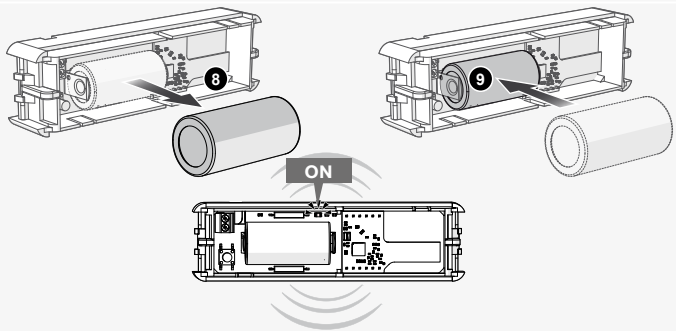
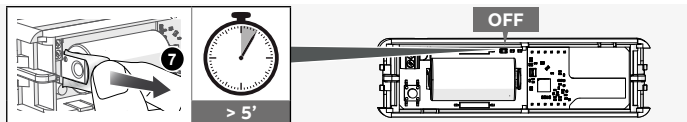
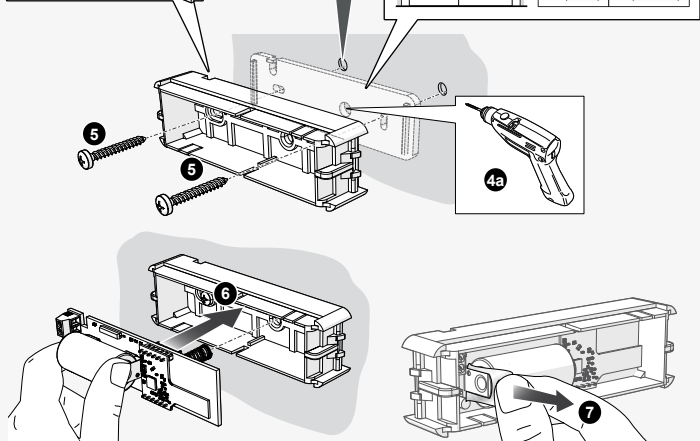
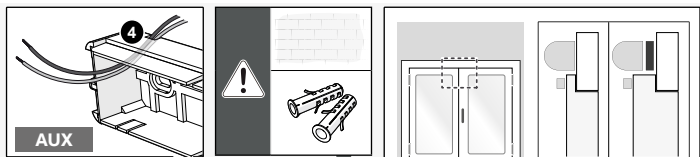


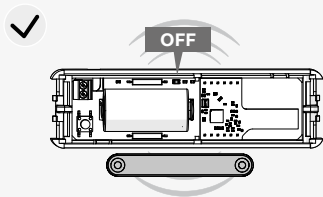
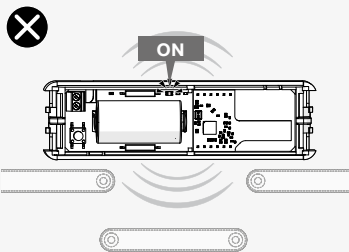
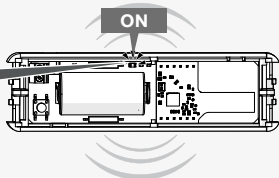
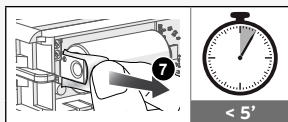
2	3V - 1,4 Ah
5	Optional
6	Mandatory only on metal surfaces
7	Ø 5 mm
8	15 mm
9	20 mm
10	24 mm
11	2,9x27 mm
12	Optional



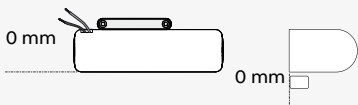
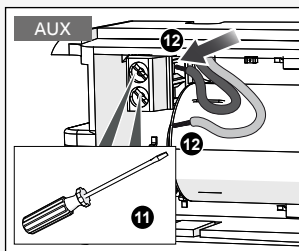
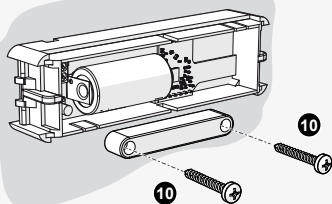
2



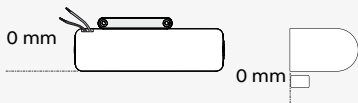
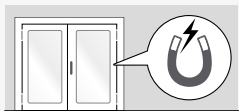




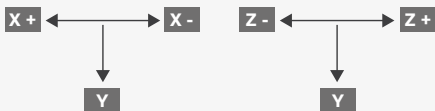
0,3 ± 0,2 cm



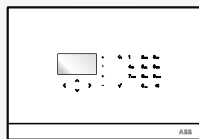
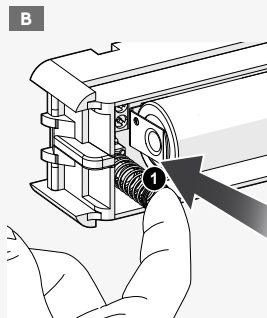
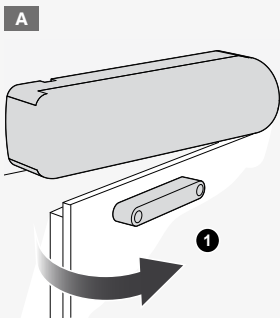
[mm]	⚡	⚡
Y	± 3	10 15
X+	± 2	8 10
X-	± 2	10 12
Z+	± 3	13 16
Z-	± 2	8 11



[mm]			
Y	± 2	7	11
X+	± 3	11	14
X-	± 2	12	14
Z+	± 2	9	15
Z-	± 2	6	10



3



Spezifische Parameter des Sensors:

Parameter	Werte	Funktion
1	Aktivieren (*)	Kanal 1 (interner Reed) aktiviert
	Deaktivieren	Kanal 1 (interner Reed) deaktiviert
2	Impulsiv	Kanal-Typ 1: impulsiv
	Bistabil (*)	Kanal-Typ 1: bistabil
3	Aktivieren	Kanal 2 (zusätzlicher Input) aktiviert
	Deaktiviert (*)	Kanal 2 (zusätzlicher Input) deaktiviert
4	Impulsiv	Kanal-Typ 2: impulsiv
	Bistabil (*)	Kanal-Typ 2: bistabil
5	Standard	Betrieb Kanal 2: Standard
	Nur Öffnung (*)	Betrieb Kanal 2: Nur Öffnung
6	04 (*)	Anzahl der Impulse (2÷8)

(*) Werkeinstellungen

Anmerkung: Die Betriebsart Impulsiv entspricht nicht der Richtlinie EN50131-2-6.

Sensor specific parameters:

Parameter	Values	Function
1	Enable (*)	Channel 1 (internal reed) enabled
	Disable	Channel 1 (internal reed) disabled
2	Pulse	Channel 1 type: pulse
	Bistable (*)	Channel 1 type: bistable
3	Enable	Channel 2 (additional input) enabled
	Disable (*)	Channel 2 (additional input) disabled
4	Pulse	Channel 2 type: pulse
	Bistable (*)	Channel 2 type: bistable
5	Standard	Channel 2 operation: Standard
	Open only (*)	Channel 2 operation: Open only
6	04 (*)	Number of pulses (2-8)

(*) factory setting

N.B.: The pulse mode does not comply with EN50131-2-6.

Specifieke parameters van de sensor:

Parameter	Waarden	Functie
1	Activeren (*)	Kanaal 1 (interne reed) geactiveerd
	Deactiveren	Kanaal 1 (interne reed) gedeactiveerd
2	Impuls	Type kanaal 1: impuls
	Bistabil (*)	Type kanaal 1: bistabil
3	Activeren	Kanaal 2 (extra ingang) geactiveerd
	Deactiveren (*)	Kanaal 2 (extra ingang) gedeactiveerd
4	Impuls	Type kanaal 2: impuls
	Bistabil (*)	Type kanaal 2: bistabil
5	Standaard	Werking kanaal 2: Standaard
	Alleen opening (*)	Werking kanaal 2: Alleen opening
6	04 (*)	Aantal impulsen (2÷8)

(*) fabrieksinstellingen

N.B.: De werking op impulsen voldoet niet aan de norm EN50131-2-6.

Paramètres spécifiques du capteur :

Paramètre	Valeurs	Fonction
1	Activer (*)	Canal 1 (reed interne) activé
	Désactiver	Canal 1 (reed interne) désactivé
2	Impulsif	Type canal 1 : impulsif
	Bistable (*)	Type canal 1 : bistable
3	Activer	Canal 2 (entrée supplémentaire) activé
	Désactiver (*)	Canal 2 (entrée supplémentaire) désactivé
4	Impulsif	Type canal 2 : impulsif
	Bistable (*)	Type canal 2 : bistable
5	Standard	Fonctionnement canal 2 : Standard
	Ouverture seulement (*)	Fonctionnement canal 2 : Ouverture seulement
6	04 (*)	Nombre d'impulsions (2÷8)

(*) sélections nominales

N.B. : La modalité Impulsive n'est pas conforme à la norme EN50131-2-6.

Parametri specifici del sensore:

Parametro	Valori	Funzione
1	Abilita (*)	Canale 1 (reed interno) abilitato
	Disabilita	Canale 1 (reed interno) disabilitato
2	Impulsivo	Tipo canale 1: impulsivo
	Bistabile (*)	Tipo canale 1: bistabile
3	Abilita	Canale 2 (input aggiuntivo) abilitato
	Disabilita (*)	Canale 2 (input aggiuntivo) disabilitato
4	Impulsivo	Tipo canale 2: impulsivo
	Bistabile (*)	Tipo canale 2: bistabile
5	Standard	Funzionamento canale 2: Standard
	Solo apertura (*)	Funzionamento canale 2: Solo apertura
6	04 (*)	Numero impulsi (2÷8)

(*) impostazioni di fabbrica

N.B.: La modalità Impulsiva non è conforme alla norma EN50131-2-6.

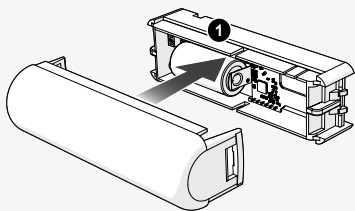
Parámetros específicos del sensor:

Parámetro	Valores	Función
1	Activa (*)	Canal 1 ("reed" interno) activado
	Desactiva	Canal 1 ("reed" interno) desactivado
2	Impulsivo	Tipo canal 1: impulsivo
	Biestable (*)	Tipo canal 1: biestable
3	Activa	Canal 2 (entrada adicional) activado
	Desactiva (*)	Canal 2 (entrada adicional) desactivado
4	Impulsivo	Tipo canal 2: impulsivo
	Biestable (*)	Tipo canal 2: biestable
5	Estándar	Funcionamiento canal 2: Estándar
	Solo apertura (*)	Funcionamiento canal 2: Solo apertura
6	04 (*)	Número de impulsos (2÷8)

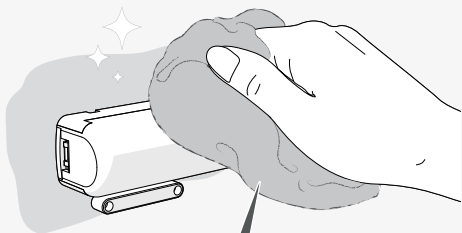
(*) configuración de fábrica

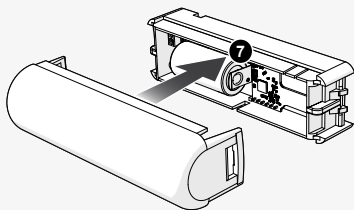
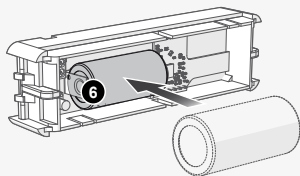
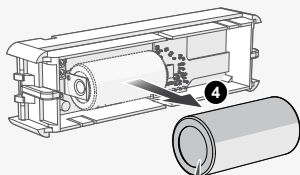
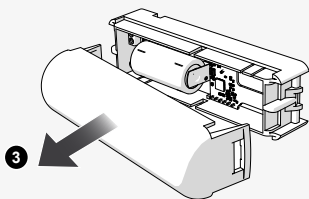
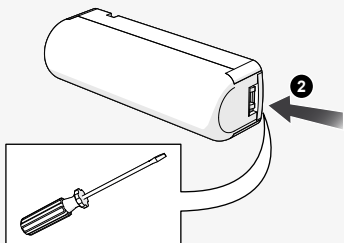
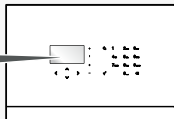
N.B.: El modo impulsivo no es conforme con la norma EN50131-2-6.

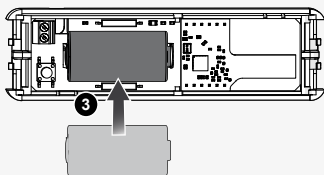
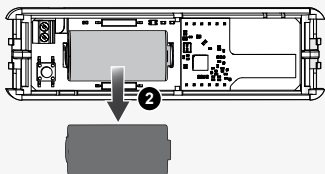
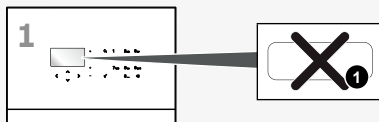
4



5





6

Technical features

Field of application	Security
Communication technology	FM 868.3 MHz transmission
Range in free field	300 m
Power supply	3V – 1.4 Ah lithium battery CR123A, life 5 years. Operation is guaranteed for 30 days from the low battery signal.
Sensing elements	2 reed 1 programmable NC auxiliary input for volt-free contact
Signalling elements	1 calibration LED Low battery signal to control unit (threshold 2.7 V)
Tamper protection	Double tamper proof
Operating temperature	-5 ... + 45°C (*)
Operating relative humidity	Max 95% (non-condensing)
Use environment	Indoors (sheltered and dry places)
Installation	Stand-alone
Dimensions (L x H x D)	Detector: 31 x 106 x 35 mm Magnet: 8 x 56 x 10 mm
Performance	Complies with EN 50131-1 and EN 50131-2-6 Class I - grade 2



Hereby, manufacturer, declares that the radio equipment type "SMC-W1.11c", "SMC-W1.1c", "2CSYD0104c", is in compliance with Directive 2014/53/EU. The full text of the EU declaration of conformity is available at the following internet address:



<https://www.busch-jaeger-katalog.de/index.php?bereich=1081520>



<https://new.abb.com/low-voltage/products/building-automation/product-range/intrusion-alarm-systems/system/abb-secureathome>



Busch-/ABB-secure@home

Busch-Jaeger Elektro GmbH
Freisenbergstraße 2
D-58513 Lüdenscheid

ABB S.p.A.
Viale dell'Industria, 18
20009 Vittuone (MI), Italy