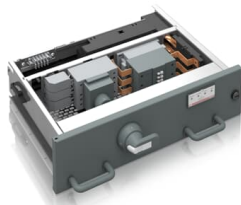




PRODUCT-DETAILS

MStart

Withdrawable Motor Starter for MNSiS



General Information

| | |
|-----------------------|--|
| Extended Product Type | MStart |
| Product ID | 1TGE252011K5080 |
| Catalog Description | Withdrawable Motor Starter for MNSiS |
| Long Description | Withdrawable Motor Starter for MNSiS (6E, Circuit Breaker), Rated Voltage [V]= 500, Short-Circuit Current [kA]= 50, Rated Power [kW]= 37, Rated Current[A]= 53 |

Dimensions

| | |
|----------------------------|--------|
| Product Net Width | 600 mm |
| Product Net Height | 150 mm |
| Product Net Depth / Length | 465 mm |

Certificates and Declarations

| | |
|--------------------------------|------------|
| Declaration of Conformity - CE | 1TGE097001 |
|--------------------------------|------------|

Popular Downloads

| | |
|-----------------------------------|------------------------------------|
| Data Sheet, Technical Information | 1TGC910001B0204 1TGC910809M0202 |
|-----------------------------------|------------------------------------|

Classifications

| | |
|---------------|---------------------------|
| WEEE Category | Product Not in WEEE Scope |
|---------------|---------------------------|

Additional Information

| | |
|-------------------|--------------------------|
| Product Main Type | DOL (3-pole, heavy duty) |
|-------------------|--------------------------|

Categories

Low Voltage Products and Systems → Low Voltage Systems → IEC - Low Voltage Motor Control Centers → MNS iS
Low Voltage Products and Systems → Service → Spares and Consumables → Parts

